

For Research Use Only

# CNPY2/MSAP Polyclonal antibody, PBS Only

Catalog Number: 14635-1-PBS

Featured Product



## Basic Information

Catalog Number:

14635-1-PBS

Size:

100ug, Concentration: 1 mg/ml by Nanodrop;

Source:

Rabbit

Isotype:

IgG

Immunogen Catalog Number:

AG6214

GenBank Accession Number:

BC065015

GeneID (NCBI):

10330

UNIPROT ID:

Q9Y2B0

Full Name:

canopy 2 homolog (zebrafish)

Calculated MW:

21 kDa

Observed MW:

17-21 kDa

Purification Method:

Antigen affinity purification

## Applications

Tested Applications:

WB, IHC, IF/ICC, FC (Intra), IP, Indirect ELISA

Species Specificity:

human, mouse, rat

## Background Information

CNPY2, also named as MSAP, TMEM4 and ZSIG9, is a positive regulator of neurite outgrowth. It interacts with the ezrin-radixin-moesin (ERM)-like myosin regulatory light chain-interacting protein (MIR), and the two proteins are co-localized in cell lines and in primary neurons. CNPY2 can stabilize MRLC and thus bring about an increase in neurite outgrowth. (PMID: 12826659) This antibody is specific to CNPY2.

## Storage

Storage:

Store at -80°C.

Storage Buffer:

PBS Only

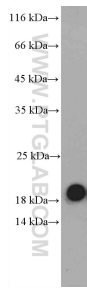
For technical support and original validation data for this product please contact:

T: 1 (888) 4PTGLAB (1-888-478-4522) (toll free in USA), or 1(312) 455-8498 (outside USA)

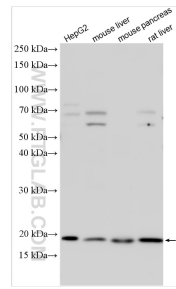
E: [proteintech@ptglab.com](mailto:proteintech@ptglab.com)  
W: [ptglab.com](http://ptglab.com)

This product is exclusively available under Proteintech Group brand and is not available to purchase from any other manufacturer.

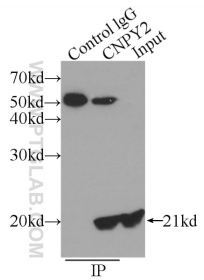
## Selected Validation Data



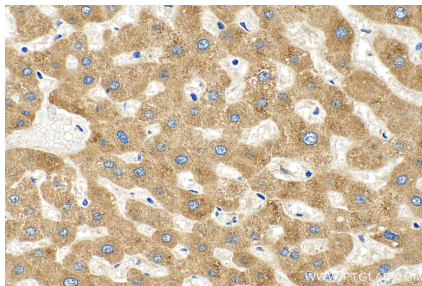
mouse pancreas tissue were subjected to SDS PAGE followed by western blot with 14635-1-AP (CNPY2, MSAP antibody) at dilution of 1:300 incubated at room temperature for 1.5 hours. This data was developed using the same antibody clone with 14635-1-PBS in a different storage buffer formulation.



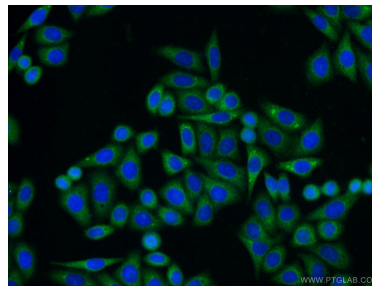
Various lysates were subjected to SDS PAGE followed by western blot with 14635-1-AP (CNPY2, MSAP antibody) at dilution of 1:4000 incubated at room temperature for 1.5 hours. This data was developed using the same antibody clone with 14635-1-PBS in a different storage buffer formulation.



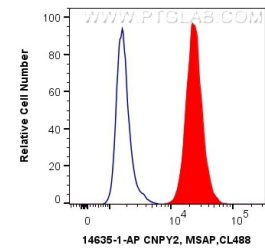
IP result of anti-CNPY2, MSAP (IP:14635-1-AP, 3ug; Detection:14635-1-AP 1:500) with HepG2 cells lysate 600ug. This data was developed using the same antibody clone with 14635-1-PBS in a different storage buffer formulation.



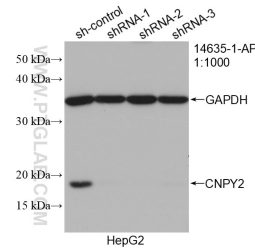
Immunohistochemical analysis of paraffin-embedded human liver tissue slide using 14635-1-AP (CNPY2, MSAP antibody) at dilution of 1:400 (under 40x lens). Heat mediated antigen retrieval with Sodium Citrate buffer (pH 6.0). This data was developed using the same antibody clone with 14635-1-PBS in a different storage buffer formulation.



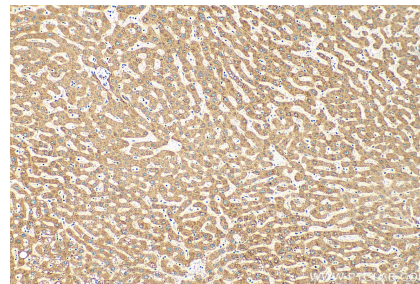
Immunofluorescent analysis of HepG2 cells using 14635-1-AP (CNPY2, MSAP antibody) at dilution of 1:50 and Alexa Fluor 488-conjugated AffiniPure Goat Anti-Rabbit IgG(H+L). This data was developed using the same antibody clone with 14635-1-PBS in a different storage buffer formulation.



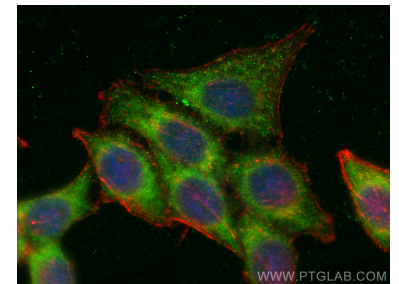
$1 \times 10^6$  HepG2 cells were intracellularly stained with 0.4 ug Anti-Human CNPY2, MSAP (14635-1-AP) and CoraLite@488-Conjugated AffiniPure Goat Anti-Rabbit IgG(H+L) at dilution 1:1000 (red), or 0.4 ug Control Antibody. Cells were fixed with 4% PFA and permeabilized with Flow Cytometry Perm Buffer (PF00011-C). This data was developed using the same antibody clone with 14635-1-PBS in a different storage buffer formulation.



WB result of CNPY2, MSAP antibody (14635-1-AP; 1:1000; incubated at room temperature for 1.5 hours) with sh-Control and sh-CNPY2, MSAP transfected HepG2 cells. This data was developed using the same antibody clone with 14635-1-PBS in a different storage buffer formulation.



Immunohistochemical analysis of paraffin-embedded human liver tissue slide using 14635-1-AP (CNPY2, MSAP antibody) at dilution of 1:400 (under 10x lens). Heat mediated antigen retrieval with Sodium Citrate buffer (pH 6.0). This data was developed using the same antibody clone with 14635-1-PBS in a different storage buffer formulation.



Immunofluorescent analysis of (-20°C Ethanol) fixed HepG2 cells using CNPY2, MSAP antibody (14635-1-AP) at dilution of 1:200 and CoraLite@488-Conjugated AffiniPure Goat Anti-Rabbit IgG(H+L), CL594-Phalloidin (red). This data was developed using the same antibody clone with 14635-1-PBS in a different storage buffer formulation.