

For Research Use Only

ERAP2 Polyclonal antibody

Catalog Number: 14637-1-AP



Basic Information

Catalog Number: 14637-1-AP	GenBank Accession Number: BC065240	Purification Method: Antigen affinity purification
Size: 150ul , Concentration: 173 µg/ml by Bradford method using BSA as the standard;	GeneID (NCBI): 64167	Recommended Dilutions: WB 1:500-1:1000 IHC 1:50-1:500 IF 1:20-1:200
Source: Rabbit	Full Name: endoplasmic reticulum aminopeptidase 2	
Isotype: IgG	Calculated MW: 110 kDa	
Immunogen Catalog Number: AG6216	Observed MW: 61-65 kDa	

Applications

Tested Applications:

IF, IHC, WB, ELISA

Species Specificity:

human, mouse

Note-IHC: suggested antigen retrieval with TE buffer pH 9.0; (*) Alternatively, antigen retrieval may be performed with citrate buffer pH 6.0

Positive Controls:

WB : K-562 cells, A549 cells, mouse thymus tissue

IHC : human lung cancer tissue, human liver tissue

IF : HepG2 cells,

Background Information

ERAP2(Endoplasmic reticulum aminopeptidase 2) is also named as LRAP(Leukocyte-derived arginine aminopeptidase) and belongs to the peptidase M1 family. It plays a central role in peptide trimming, a step required for the generation of most HLA class I-binding peptides. It can form heterodimers with ERAP1(PMID:15908954). It has 4 isoforms produced by alternative splicing. And defects in the expression of this gene may cause improper antigen processing, possibly leading to favor tumor escape from the immune surveillance.

Storage

Storage:

Store at -20°C. Stable for one year after shipment.

Storage Buffer:

PBS with 0.02% sodium azide and 50% glycerol pH 7.3.

Aliquoting is unnecessary for -20°C storage

***** 20ul sizes contain 0.1% BSA**

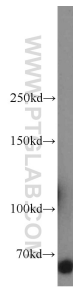
For technical support and original validation data for this product please contact:

T: 1 (888) 4PTGLAB (1-888-478-4522) (toll free in USA), or 1(312) 455-8498 (outside USA)

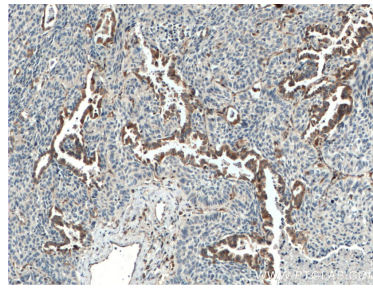
E: proteintech@ptglab.com
W: ptglab.com

This product is exclusively available under Proteintech Group brand and is not available to purchase from any other manufacturer.

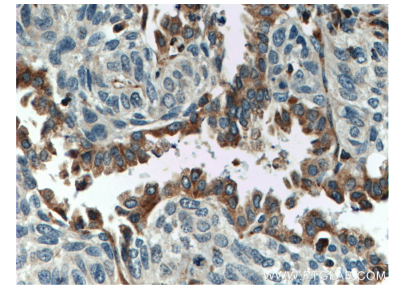
Selected Validation Data



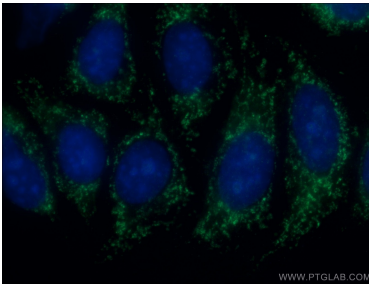
K-562 cells were subjected to SDS PAGE followed by western blot with 14637-1-AP (ERAP2 antibody) at dilution of 1:600 incubated at room temperature for 1.5 hours.



Immunohistochemical analysis of paraffin-embedded human lung cancer tissue slide using 14637-1-AP (ERAP2 antibody) at dilution of 1:50 (under 10x lens. Heat mediated antigen retrieval with Tris-EDTA buffer (pH 9.0)).



Immunohistochemical analysis of paraffin-embedded human lung cancer tissue slide using 14637-1-AP (ERAP2 antibody) at dilution of 1:50 (under 40x lens. Heat mediated antigen retrieval with Tris-EDTA buffer (pH 9.0)).



Immunofluorescent analysis of (-20°C Ethanol) fixed HepG2 cells using 14637-1-AP (ERAP2 antibody) at dilution of 1:50 and Alexa Fluor 488-conjugated AffiniPure Goat Anti-Rabbit IgG(H+L).