

For Research Use Only

SIN3A Polyclonal antibody

Catalog Number: 14638-1-AP **5 Publications**



Basic Information

Catalog Number:

14638-1-AP

Size:

150ul, Concentration: 800 ug/ml by Nanodrop and 353 ug/ml by Bradford method using BSA as the standard;

Source:

Rabbit

Isotype:

IgG

Immunogen Catalog Number:

AG6219

GenBank Accession Number:

BC066364

GeneID (NCBI):

25942

UNIPROT ID:

Q96ST3

Full Name:

SIN3 homolog A, transcription regulator (yeast)

Calculated MW:

145 kDa

Observed MW:

150 kDa

Purification Method:

Antigen affinity purification

Recommended Dilutions:

WB 1:500-1:1000

IP 0.5-4.0 ug for 1.0-3.0 mg of total protein lysate

IF/ICC 1:400-1:1600

Applications

Tested Applications:

WB, IF/ICC, IP, ELISA

Cited Applications:

WB, IP, CoIP

Species Specificity:

human, mouse, rat

Cited Species:

human, mouse, rat

Positive Controls:

WB: Jurkat cells, HEK-293 cells, HeLa cells, K-562 cells

IP: Jurkat cells,

IF/ICC: HepG2 cells,

Notable Publications

Author	Pubmed ID	Journal	Application
Ti-Chun Chan	33052246	Theranostics	WB
Kai Qu	35342333	Int J Biol Sci	WB, CoIP
Miaomei Yu	38978801	Bioact Mater	WB

Storage

Storage:

Store at -20°C. Stable for one year after shipment.

Storage Buffer:

PBS with 0.02% sodium azide and 50% glycerol pH 7.3.

Aliquoting is unnecessary for -20°C storage

***** 20ul sizes contain 0.1% BSA**

For technical support and original validation data for this product please contact:

T: 1 (888) 4PTGLAB (1-888-478-4522) (toll free in USA), or 1(312) 455-8498 (outside USA)

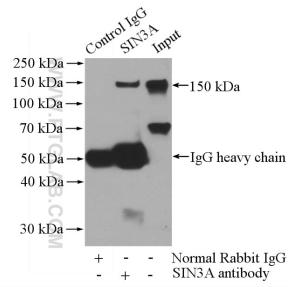
E: proteintech@ptglab.com
W: ptglab.com

This product is exclusively available under Proteintech Group brand and is not available to purchase from any other manufacturer.

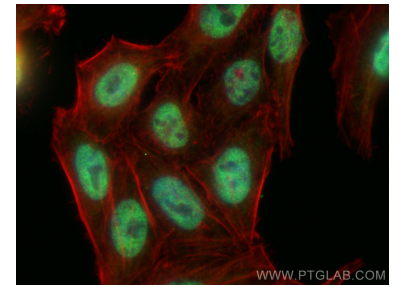
Selected Validation Data



Jurkat cells were subjected to SDS PAGE followed by western blot with 14638-1-AP (SIN3A antibody) at dilution of 1:500 incubated at room temperature for 1.5 hours.



IP result of anti-SIN3A (IP:14638-1-AP, 4ug; Detection:14638-1-AP 1:500) with Jurkat cells lysate 3600ug.



Immunofluorescent analysis of (4% PFA) fixed HepG2 cells using SIN3A antibody (14638-1-AP) at dilution of 1:800 and CoraLite®488-Conjugated AffiniPure Goat Anti-Rabbit IgG(H+L) (SA00013-2), CL594-phalloidin (red).