

For Research Use Only

Beta Adducin Polyclonal antibody

Catalog Number: 14640-1-AP **1 Publications**



Basic Information

Catalog Number:
14640-1-AP

Size:
150ul , Concentration: 170 µg/ml by Nanodrop and 133 µg/ml by Bradford method using BSA as the standard;

Source:
Rabbit

Isotype:
IgG

Immunogen Catalog Number:
AG6223

GenBank Accession Number:
BC065525

GeneID (NCBI):
119

Full Name:
adducin 2 (beta)

Calculated MW:
81 kDa

Observed MW:
110 kDa

Purification Method:
Antigen affinity purification

Recommended Dilutions:
WB 1:500-1:1000
IP 0.5-4.0 ug for IP and 1:500-1:2000 for WB

Applications

Tested Applications:
IP, WB, ELISA

Cited Applications:
IF

Species Specificity:
human, mouse, rat

Cited Species:
human

Positive Controls:

WB : mouse brain tissue, rat brain tissue

IP : K-562 cells,

Background Information

Notable Publications

| Author | Pubmed ID | Journal | Application |
|-------------|-----------|---------|-------------|
| Hong Ouyang | 35857527 | Sci Adv | IF |

Storage

Storage:

Store at -20°C. Stable for one year after shipment.

Storage Buffer:

PBS with 0.02% sodium azide and 50% glycerol pH 7.3.

Aliquoting is unnecessary for -20°C storage

***** 20ul sizes contain 0.1% BSA**

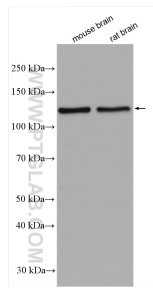
For technical support and original validation data for this product please contact:

T: 1 (888) 4PTGLAB (1-888-478-4522) (toll free in USA), or 1(312) 455-8498 (outside USA)

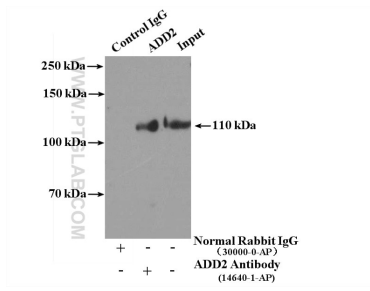
E: proteintech@ptglab.com
W: ptglab.com

This product is exclusively available under Proteintech Group brand and is not available to purchase from any other manufacturer.

Selected Validation Data



Various lysates were subjected to SDS PAGE followed by western blot with 14640-1-AP (Beta adducin antibody) at dilution of 1:600 incubated at room temperature for 1.5 hours.



IP Result of anti-Beta adducin (IP:14640-1-AP, 4ug; Detection:14640-1-AP 1:1000) with K-562 cells lysate 3200ug.