

IGF2BP3 Polyclonal antibody

Catalog Number: 14642-1-AP

Featured Product

87 Publications

Basic Information

Catalog Number: 14642-1-AP	GenBank Accession Number: BC065269	Purification Method: Antigen affinity purification
Size: 150ul , Concentration: 500 µg/ml by Nanodrop;	GeneID (NCBI): 10643	Recommended Dilutions: WB 1:2000-1:10000 IP 0.5-4.0 ug for 1.0-3.0 mg of total protein lysate IHC 1:50-1:500 IF 1:10-1:100
Source: Rabbit	Full Name: insulin-like growth factor 2 mRNA binding protein 3	
Isotype: IgG	Calculated MW: 64 kDa	
Immunogen Catalog Number: AG6226	Observed MW: 64 kDa	

Applications

Tested Applications: IF, IHC, IP, WB, ELISA	Positive Controls:
Cited Applications: IF, IHC, IP, RIP, WB	WB : HEK-293 cells, HeLa cells, HepG2 cells, mouse brain tissue, mouse placenta tissue, BxPC-3 cells, NIH/3T3 cells
Species Specificity: human, mouse	IP : HEK-293 cells,
Cited Species: human, rat, mouse	IHC : human pancreas tissue,
	IF : MCF-7 cells,
Note-IHC: suggested antigen retrieval with TE buffer pH 9.0; (*) Alternatively, antigen retrieval may be performed with citrate buffer pH 6.0	

Background Information

IGF2BP3, also named IMP3, KOC1, and VICKZ3, belongs to the RRM IMP/VICKZ family. It is one of the RNA binding proteins involved in mRNA localization and translational control. IGF2BP3 is expressed during embryogenesis, as well as in some malignant tumors. It can be used as an independent prognostic factor for osteosarcoma. Both isoforms (64kd and 22kd) of IGFBP3 can be recognized by this antibody. And IGFBP3 is nuclear and cytoplasm stains.

Notable Publications

Author	Pubmed ID	Journal	Application
Zhou Yang	32993738	J Exp Clin Cancer Res	WB,IHC
Reschke Markus M	24055062	Cell Rep	WB
Yaru Zhang	32926933	Life Sci	WB

Storage

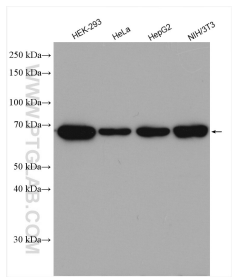
Storage:
Store at -20°C. Stable for one year after shipment.
Storage Buffer:
PBS with 0.02% sodium azide and 50% glycerol pH 7.3.
 Aliquoting is unnecessary for -20°C storage

*** 20ul sizes contain 0.1% BSA

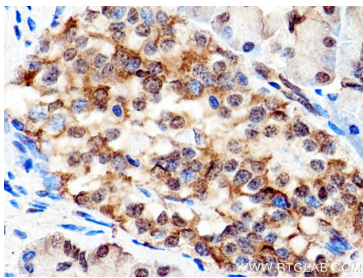
For technical support and original validation data for this product please contact:
 T: 1 (888) 4PTGLAB (1-888-478-4522) (toll free in USA), or 1(312) 455-8498 (outside USA)
 E: proteintech@ptglab.com
 W: ptglab.com

This product is exclusively available under Proteintech Group brand and is not available to purchase from any other manufacturer.

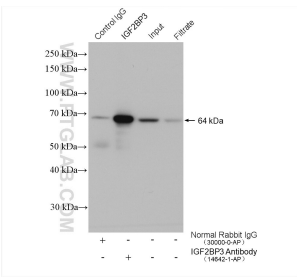
Selected Validation Data



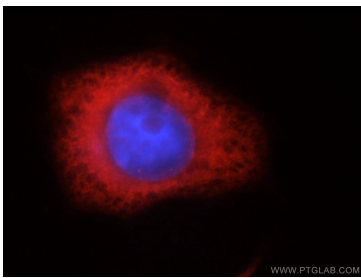
Various lysates were subjected to SDS PAGE followed by western blot with 14642-1-AP (IGF2BP3 antibody) at dilution of 1:5000 incubated at room temperature for 1.5 hours.



Immunohistochemical analysis of paraffin-embedded human pancreas tissue slide using 14642-1-AP (IGF2BP3 antibody) at dilution of 1:200 (under 40x lens). Heat mediated antigen retrieval with Tris-EDTA buffer (pH 9.0).



IP result of anti-IGF2BP3 (IP:14642-1-AP, 5ug; Detection:14642-1-AP 1:2000) with HEK-293 cells lysate 1040 ug.



Immunofluorescent analysis of MCF-7 cells, using IGF2BP3 antibody 14642-1-AP at 1:25 dilution and Rhodamine-labeled goat anti-rabbit IgG (red). Blue pseudocolor = DAPI (fluorescent DNA dye).