

For Research Use Only

MPP3 Polyclonal antibody

Catalog Number: 14650-1-AP

Featured Product

2 Publications



Basic Information

Catalog Number: 14650-1-AP	GenBank Accession Number: BC056865	Purification Method: Antigen affinity purification
Size: 150ul , Concentration: 260 µg/ml by Nanodrop and 200 µg/ml by Bradford method using BSA as the standard;	GeneID (NCBI): 4356	Recommended Dilutions: IHC 1:20-1:200
Source: Rabbit	Full Name: membrane protein, palmitoylated 3 (MAGUK p55 subfamily member 3)	
Isotype: IgG	Calculated MW: 66 kDa	
Immunogen Catalog Number: AG6246		

Applications

Tested Applications: IHC, ELISA	Positive Controls: IHC : human lung cancer tissue,
Cited Applications: IHC	
Species Specificity: human, mouse, rat	
Cited Species: mouse	

Note-IHC: suggested antigen retrieval with TE buffer pH 9.0; (*) Alternatively, antigen retrieval may be performed with citrate buffer pH 6.0

Background Information

MPP3, also named as DLG3, belongs to the MAGUK family which interact with the cytoskeleton and regulate cell proliferation, signaling pathways, and intracellular junctions. MPP3 plays an important role in signal transduction.

Notable Publications

Author	Pubmed ID	Journal	Application
Park Bokyung B	22114289	J Neurosci	IHC
Dudok Jacobus J JJ	23658188	J Neurosci	IHC

Storage

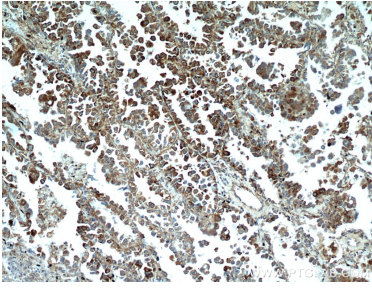
Storage:
Store at -20°C. Stable for one year after shipment.
Storage Buffer:
PBS with 0.02% sodium azide and 50% glycerol pH 7.3.
Aliquoting is unnecessary for -20°C storage

*** 20ul sizes contain 0.1% BSA

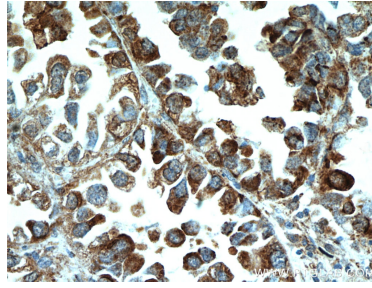
For technical support and original validation data for this product please contact:
T: 1 (888) 4PTGLAB (1-888-478-4522) (toll free in USA), or 1(312) 455-8498 (outside USA)
E: proteintech@ptglab.com
W: ptglab.com

This product is exclusively available under Proteintech Group brand and is not available to purchase from any other manufacturer.

Selected Validation Data



Immunohistochemical analysis of paraffin-embedded human lung cancer using 14650-1-AP (MPP3 antibody) at dilution of 1:50 (under 10x lens).



Immunohistochemical analysis of paraffin-embedded human lung cancer using 14650-1-AP (MPP3 antibody) at dilution of 1:50 (under 40x lens).