

For Research Use Only

RPL18A Polyclonal antibody

Catalog Number: 14653-1-AP

4 Publications



Basic Information

Catalog Number: 14653-1-AP	GenBank Accession Number: BC066319	Purification Method: Antigen affinity purification
Size: 150ul , Concentration: 300 ug/ml by Nanodrop and 227 ug/ml by Bradford method using BSA as the standard;	GeneID (NCBI): 6142	Recommended Dilutions: WB 1:200-1:1000
Source: Rabbit	UNIPROT ID: Q02543	IHC 1:20-1:200
Isotype: IgG	Full Name: ribosomal protein L18a	IF/ICC 1:200-1:800
Immunogen Catalog Number: AG6251	Calculated MW: 21 kDa	
	Observed MW: 23 kDa	

Applications

Tested Applications: WB, IHC, IF/ICC, ELISA	Positive Controls:
Cited Applications: WB	WB : HepG2 cells, HeLa cells, human brain tissue, mouse lung tissue, PC-3 cells
Species Specificity: human, mouse, rat	IHC : human prostate cancer tissue,
Cited Species: human, mouse, rat	IF/ICC : HepG2 cells,
Note-IHC: suggested antigen retrieval with TE buffer pH 9.0; (*) Alternatively, antigen retrieval may be performed with citrate buffer pH 6.0	

Background Information

RPL18A, also named as 60S ribosomal protein L18a(Ribosomal Protein L18a), located on 19p13.11, is a protein coding gene. RPL18A is a member of the L18AE family of ribosomal proteins that is a component of the 60S subunit. The encoded protein may play a role in viral replication by interacting with the hepatitis C virus internal ribosome entry site (IRES). Diseases such as Hepatitis C Virus and Omsk Hemorrhagic Fever are associated with RPL18A. The molecular weight of RPL18A is 23 kDa.

Notable Publications

Author	Pubmed ID	Journal	Application
Riikka Jokinen	25808953	Genetics	WB
Haiping Tang	27325206	Sci Rep	WB
Sudeep Karki	37983950	EMBO Rep	WB

Storage

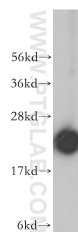
Storage:
Store at -20°C. Stable for one year after shipment.
Storage Buffer:
PBS with 0.02% sodium azide and 50% glycerol pH 7.3.
Aliquoting is unnecessary for -20°C storage

*** 20ul sizes contain 0.1% BSA

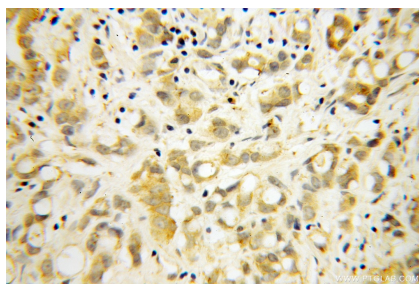
For technical support and original validation data for this product please contact:
T: 1 (888) 4PTGLAB (1-888-478-4522) (toll free in USA), or 1(312) 455-8498 (outside USA)
E: proteintech@ptglab.com
W: ptglab.com

This product is exclusively available under Proteintech Group brand and is not available to purchase from any other manufacturer.

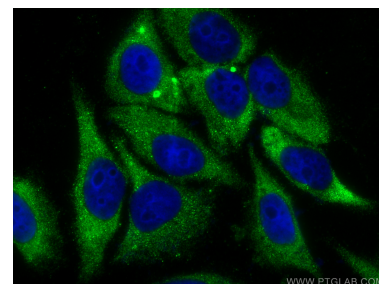
Selected Validation Data



HepG2 cells were subjected to SDS PAGE followed by western blot with 14653-1-AP (RPL18A antibody) at dilution of 1:400 incubated at room temperature for 1.5 hours.



Immunohistochemical analysis of paraffin-embedded human prostate cancer using 14653-1-AP (RPL18A antibody) at dilution of 1:100 (under 40x lens).



Immunofluorescent analysis of (-20°C Ethanol) fixed HepG2 cells using RPL18A antibody (14653-1-AP) at dilution of 1:400 and Coralite®488-Conjugated Goat Anti-Rabbit IgG(H+L).