

For Research Use Only

EIF1AX Polyclonal antibody

Catalog Number: 14654-1-AP

1 Publications



Basic Information

Catalog Number:

14654-1-AP

Size:

150ul , Concentration: 900 ug/ml by Nanodrop and 353 ug/ml by Bradford method using BSA as the standard;

Source:

Rabbit

Isotype:

IgG

Immunogen Catalog Number:

AG6253

GenBank Accession Number:

BC067851

GeneID (NCBI):

1964

UNIPROT ID:

P47813

Full Name:

eukaryotic translation initiation factor 1A, X-linked

Calculated MW:

16 kDa

Observed MW:

16-23 kDa

Purification Method:

Antigen affinity purification

Recommended Dilutions:

WB 1:500-1:1000

IF/ICC 1:50-1:500

Applications

Tested Applications:

WB, IF/ICC, ELISA

Cited Applications:

WB

Species Specificity:

human

Cited Species:

human

Positive Controls:

WB : HepG2 cells, A375 cells, HeLa cells, PC-3 cells

IF/ICC : HepG2 cells,

Background Information

Eukaryotic translation initiation factor 1A, X-chromosome(EIF1AX), designated as to distinguish from the Y-linked homolog, has an unblocked N-terminal proline, which was consistent with the general pattern of eukaryotic protein. It's may be required for maximal rate of protein biosynthesis. Like EIF4C, it enhances ribosome dissociation into subunits and stabilized the binding of the initiator Met-tRNA(I) to 40S ribosomal subunits.

Notable Publications

Author	Pubmed ID	Journal	Application
Hao-Yu Li	26306425	Proteomics	WB

Storage

Storage:

Store at -20°C. Stable for one year after shipment.

Storage Buffer:

PBS with 0.02% sodium azide and 50% glycerol pH 7.3.

Aliquoting is unnecessary for -20°C storage

*** 20ul sizes contain 0.1% BSA

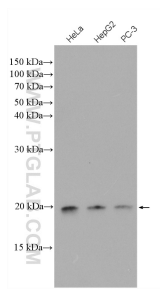
For technical support and original validation data for this product please contact:

T: 1 (888) 4PTGLAB (1-888-478-4522) (toll free in USA), or 1(312) 455-8498 (outside USA)

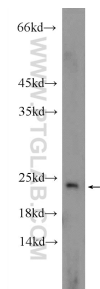
E: proteintech@ptglab.com
W: ptglab.com

This product is exclusively available under Proteintech Group brand and is not available to purchase from any other manufacturer.

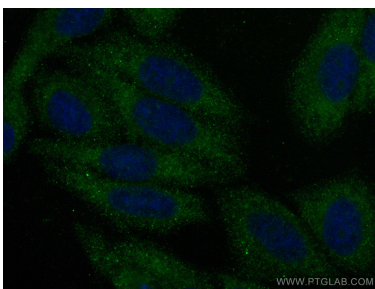
Selected Validation Data



Various lysates were subjected to SDS PAGE followed by western blot with 14654-1-AP (EIF1AX antibody) at dilution of 1:600 incubated at 4 degree celsius over night.



HepG2 cells were subjected to SDS PAGE followed by western blot with 14654-1-AP (EIF1AX Antibody) at dilution of 1:600 incubated at room temperature for 1.5 hours.



Immunofluorescent analysis of (-20°C Ethanol) fixed HepG2 cells using EIF1AX antibody (14654-1-AP) at dilution of 1:200 and CoraLite®488-Conjugated Goat Anti-Rabbit IgG(H+L) (SA00013-2).