

For Research Use Only

LIN7C Polyclonal antibody

Catalog Number: 14656-1-AP **1 Publications**



Basic Information

Catalog Number: 14656-1-AP	GenBank Accession Number: BC053907	Purification Method: Antigen affinity purification
Size: 150ul , Concentration: 500 µg/ml by Nanodrop and 253 µg/ml by Bradford method using BSA as the standard;	GeneID (NCBI): 55327	Recommended Dilutions: WB 1:1000-1:4000 IF 1:50-1:500
Source: Rabbit	Full Name: lin-7 homolog C (C. elegans)	
Isotype: IgG	Calculated MW: 22 kDa	
Immunogen Catalog Number: AG6265	Observed MW: 25 kDa	

Applications

Tested Applications: IF, WB, ELISA	Positive Controls: WB : human cerebellum tissue, human brain tissue, human kidney tissue IF : HeLa cells,
Cited Applications: WB	
Species Specificity: human, mouse, rat	
Cited Species: rat	

Background Information

Notable Publications

Author	Pubmed ID	Journal	Application
Shi N N	23032931	Neuroscience	WB

Storage

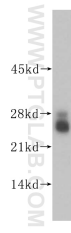
Storage:
Store at -20°C. Stable for one year after shipment.
Storage Buffer:
PBS with 0.02% sodium azide and 50% glycerol pH 7.3.
Aliquoting is unnecessary for -20°C storage

***** 20ul sizes contain 0.1% BSA**

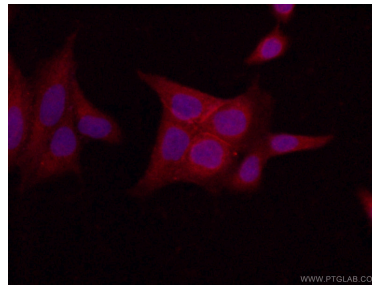
For technical support and original validation data for this product please contact:
T: 1 (888) 4PTGLAB (1-888-478-4522) (toll free in USA), or 1(312) 455-8498 (outside USA)
E: proteintech@ptglab.com
W: ptglab.com

This product is exclusively available under Proteintech Group brand and is not available to purchase from any other manufacturer.

Selected Validation Data



human cerebellum tissue were subjected to SDS PAGE followed by western blot with 14656-1-AP (LIN7C antibody) at dilution of 1:800 incubated at room temperature for 1.5 hours.



Immunofluorescent analysis of (-20°C Ethanol) fixed HeLa cells using 14656-1-AP (LIN7C antibody) at dilution of 1:50 and Alexa Fluor 488-conjugated AffiniPure Goat Anti-Rabbit IgG(H+L).