

For Research Use Only

# ESX1 Polyclonal antibody

Catalog Number: 14657-1-AP



## Basic Information

### Catalog Number:

14657-1-AP

### Size:

150ul, Concentration: 350 ug/ml by Nanodrop and 187 ug/ml by Bradford method using BSA as the standard;

### Source:

Rabbit

### Isotype:

IgG

### Immunogen Catalog Number:

AG6269

### GenBank Accession Number:

BC053599

### GeneID (NCBI):

80712

### UNIPROT ID:

Q8N693

### Full Name:

ESX homeobox 1

### Calculated MW:

44 kDa

### Observed MW:

65 kDa

### Purification Method:

Antigen affinity purification

### Recommended Dilutions:

WB 1:500-1:1000

IP 0.5-4.0 ug for 1.0-3.0 mg of total protein lysate

## Applications

### Tested Applications:

WB, IP, ELISA

### Species Specificity:

human, mouse

### Positive Controls:

WB : mouse brain tissue,

IP : mouse brain tissue,

## Background Information

ESX1, also named as ESX1L and ESX1R, is an X-linked homeobox gene primarily expressed in the placenta and testis, with physiological functions in placenta/fetus development and spermatogenesis. It has a substantively different C-terminal region subject to strong purifying selection. ESX1 can be cleaved into 2 part: ESXR1-N(45kd) and ESXR1-C(20kd). ESXR1-N acts as a transcriptional repressor. ESXR1-C has the ability to inhibit cyclin turnover.

## Storage

### Storage:

Store at -20°C. Stable for one year after shipment.

### Storage Buffer:

PBS with 0.02% sodium azide and 50% glycerol pH 7.3.

Aliquoting is unnecessary for -20°C storage

\*\*\* 20ul sizes contain 0.1% BSA

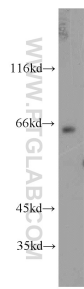
For technical support and original validation data for this product please contact:

T: 1 (888) 4PTGLAB (1-888-478-4522) (toll free in USA), or 1(312) 455-8498 (outside USA)

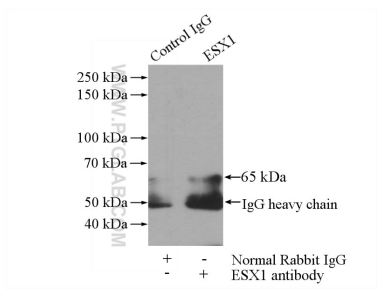
E: [proteintech@ptglab.com](mailto:proteintech@ptglab.com)  
W: [ptglab.com](http://ptglab.com)

This product is exclusively available under Proteintech Group brand and is not available to purchase from any other manufacturer.

Selected Validation Data



mouse brain tissue were subjected to SDS PAGE followed by western blot with 14657-1-AP (ESX1 antibody) at dilution of 1:800 incubated at room temperature for 1.5 hours.



IP result of anti-ESX1 (IP:14657-1-AP, 4ug; Detection:14657-1-AP 1:500) with mouse brain tissue lysate 3440ug.