

For Research Use Only

RPL37A Polyclonal antibody

Catalog Number: 14660-1-AP

3 Publications



Basic Information

Catalog Number:

14660-1-AP

Size:

150ul, Concentration: 187 ug/ml by Nanodrop and 187 ug/ml by Bradford method using BSA as the standard;

Source:

Rabbit

Isotype:

IgG

Immunogen Catalog Number:

AG6330

GenBank Accession Number:

BC063476

GeneID (NCBI):

6168

UNIPROT ID:

P61513

Full Name:

ribosomal protein L37a

Calculated MW:

10 kDa

Observed MW:

10 kDa

Purification Method:

Antigen affinity purification

Recommended Dilutions:

WB 1:1000-1:4000

IP 0.5-4.0 ug for 1.0-3.0 mg of total protein lysate

IHC 1:20-1:200

IF/ICC 1:20-1:200

Applications

Tested Applications:

WB, IHC, IF/ICC, FC (Intra), IP, ELISA

Cited Applications:

WB

Species Specificity:

human, mouse, rat

Cited Species:

human

Note-IHC: suggested antigen retrieval with TE buffer pH 9.0; (*) Alternatively, antigen retrieval may be performed with citrate buffer pH 6.0

Positive Controls:

WB : COLO 320 cells, HeLa cells, MCF-7 cells, SH-SY5Y cells

IP : MCF-7 cells,

IHC : human breast cancer tissue,

IF/ICC : SH-SY5Y cells,

Notable Publications

Author	Pubmed ID	Journal	Application
Mahmoud Dabbah	33887527	Transl Res	FC
Yujing Cheng	38981482	Cell	WB
Magdalena Wolczyk	37123244	iScience	WB

Storage

Storage:

Store at -20°C. Stable for one year after shipment.

Storage Buffer:

PBS with 0.02% sodium azide and 50% glycerol pH 7.3.

Aliquoting is unnecessary for -20°C storage

*** 20ul sizes contain 0.1% BSA

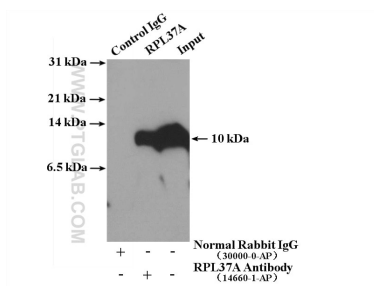
For technical support and original validation data for this product please contact:

T: 1 (888) 4PTGLAB (1-888-478-4522) (toll free in USA), or 1(312) 455-8498 (outside USA)

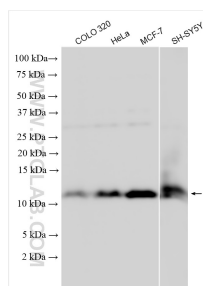
E: proteintech@ptglab.com
W: ptglab.com

This product is exclusively available under Proteintech Group brand and is not available to purchase from any other manufacturer.

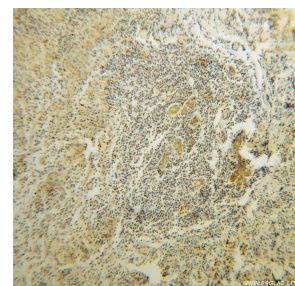
Selected Validation Data



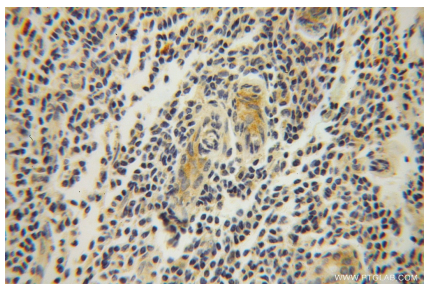
IP result of anti-RPL37A (IP:14660-1-AP, 4ug; Detection:14660-1-AP 1:500) with MCF-7 cells lysate 3480 ug.



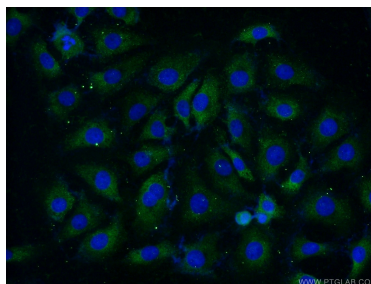
Various lysates were subjected to SDS PAGE followed by western blot with 14660-1-AP (RPL37A) antibody) at dilution of 1:2000 incubated at room temperature for 1.5 hours.



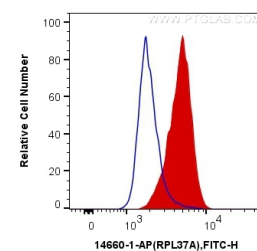
Immunohistochemical analysis of paraffin-embedded human breast cancer using 14660-1-AP (RPL37A antibody) at dilution of 1:100 (under 10x lens).



Immunohistochemical analysis of paraffin-embedded human breast cancer using 14660-1-AP (RPL37A antibody) at dilution of 1:100 (under 40x lens).



Immunofluorescent analysis of (-20°C Ethanol) fixed SH-SY5Y cells using 14660-1-AP (RPL37A) antibody) at dilution of 1:50 and Alexa Fluor 488-conjugated Goat Anti-Rabbit IgG(H+L).



1X10⁶ MCF-7 cells were intracellularly stained with 0.2 ug Anti-Human RPL37A (14660-1-AP) and CoraLite®488-Conjugated Goat Anti-Rabbit IgG(H+L) at dilution 1:1000 (red), or 0.2 ug Control Antibody. Cells were fixed with 4% PFA and permeabilized with Flow Cytometry Perm Buffer (PF00011-C).