

For Research Use Only

NOTUM Polyclonal antibody

Catalog Number: 14663-1-AP

3 Publications



Basic Information

Catalog Number:

14663-1-AP

Size:

150ul , Concentration: 650 ug/ml by Nanodrop and 333 ug/ml by Bradford method using BSA as the standard;

Source:

Rabbit

Isotype:

IgG

Immunogen Catalog Number:

AG6338

GenBank Accession Number:

BC060882

GeneID (NCBI):

147111

UNIPROT ID:

Q6P988

Full Name:

notum pectinacylesterase homolog (Drosophila)

Calculated MW:

56 kDa

Observed MW:

56 kDa

Purification Method:

Antigen affinity purification

Recommended Dilutions:

WB 1:2000-1:10000

Applications

Tested Applications:

WB, ELISA

Cited Applications:

WB

Species Specificity:

human, mouse

Cited Species:

human, rat

Positive Controls:

WB : mouse liver tissue,

Notable Publications

Author	Pubmed ID	Journal	Application
Yi-Feng Yuan	36304155	Front Pharmacol	WB
Panpan Yang	34352447	Arch Oral Biol	ELISA
Guangning You	38765115	Heliyon	WB

Storage

Storage:

Store at -20°C. Stable for one year after shipment.

Storage Buffer:

PBS with 0.02% sodium azide and 50% glycerol pH 7.3.

Aliquoting is unnecessary for -20°C storage

*** 20ul sizes contain 0.1% BSA

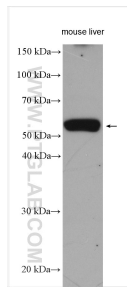
For technical support and original validation data for this product please contact:

T: 1 (888) 4PTGLAB (1-888-478-4522) (toll free in USA), or 1(312) 455-8498 (outside USA)

E: proteintech@ptglab.com
W: ptglab.com

This product is exclusively available under Proteintech Group brand and is not available to purchase from any other manufacturer.

Selected Validation Data



mouse liver lysates were subjected to SDS PAGE followed by western blot with 14663-1-AP (NOTUM antibody) at dilution of 1:5000 incubated at room temperature for 1.5 hours.