

For Research Use Only

HLA-F Polyclonal antibody, PBS Only

Catalog Number: 14670-1-PBS

Featured Product



Basic Information

Catalog Number:

14670-1-PBS

Size:

100ug, Concentration: 1 mg/ml by Nanodrop;

Source:

Rabbit

Isotype:

IgG

Immunogen Catalog Number:

AG6335

GenBank Accession Number:

BC062991

GeneID (NCBI):

3134

UNIPROT ID:

P30511

Full Name:

major histocompatibility complex, class I, F

Calculated MW:

39 kDa

Observed MW:

40-45 kDa

Purification Method:

Antigen affinity purification

Applications

Tested Applications:

WB, IHC, IP, ELISA

Species Specificity:

human

Background Information

Human major histocompatibility complex (MHC) antigens, also referred to as human leukocyte antigens (HLA), are encoded by genes located on the short arm of chromosome 6 (6p21.3). There are two classes of HLA antigens: class I and class II. This class I molecules are membrane glycoproteins composed of a heavy (alpha) chain which is encoded by a HLA class I gene, and β 2-microglobulin light (beta) chain. The most extensively characterized members of the HLA class I gene family are the genes encoding the major transplantation antigens, HLA-A, B and C. HLA-F is a non-classical MHC class I molecule. (PMID: 667938; 3375250; 2249951)

Storage

Storage:

Store at -80°C.

Storage Buffer:

PBS only, pH7.3

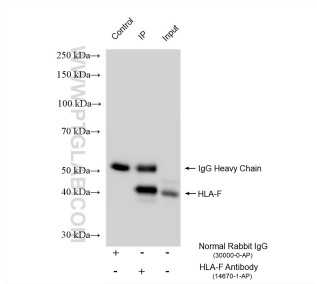
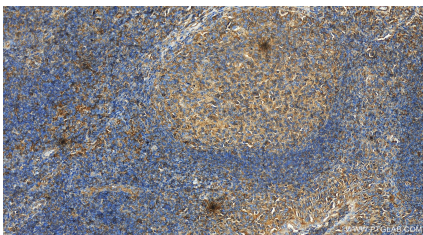
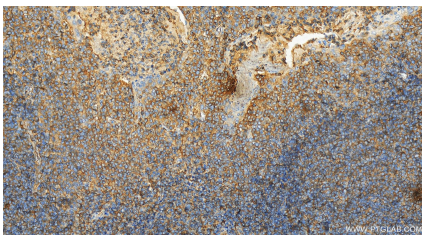
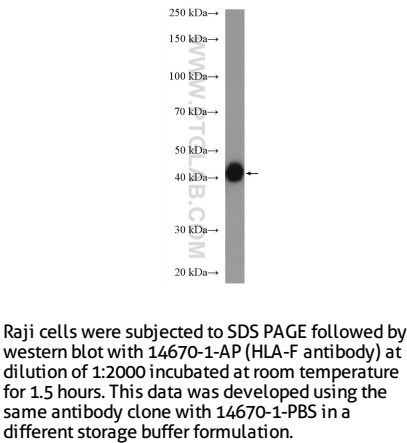
For technical support and original validation data for this product please contact:

T: 1 (888) 4PTGLAB (1-888-478-4522) (toll free in USA), or 1(312) 455-8498 (outside USA)

E: proteintech@ptglab.com
W: ptglab.com

This product is exclusively available under Proteintech Group brand and is not available to purchase from any other manufacturer.

Selected Validation Data



IP result of anti-HLA-F (IP:14670-1-AP, 4ug; Detection:14670-1-AP 1:3000) with A431 cells lysate 1040 ug. This data was developed using the same antibody clone with 14670-1-PBS in a different storage buffer formulation.