

For Research Use Only

# POLL Polyclonal antibody, PBS Only

Catalog Number: 14671-1-PBS



## Basic Information

<b>Catalog Number:</b> 14671-1-PBS	<b>GenBank Accession Number:</b> BC068529	<b>Purification Method:</b> Antigen affinity purification
<b>Size:</b> 100ug , Concentration: 1 mg/ml by Nanodrop;	<b>GeneID (NCBI):</b> 27343	
<b>Source:</b> Rabbit	<b>UNIPROT ID:</b> Q9UGP5	
<b>Isotype:</b> IgG	<b>Full Name:</b> polymerase (DNA directed), lambda	
<b>Immunogen Catalog Number:</b> AG6337	<b>Calculated MW:</b> 63 kDa	
	<b>Observed MW:</b> 63-70 kDa	

## Applications

**Tested Applications:**  
WB, Indirect ELISA

**Species Specificity:**  
human, mouse, rat

## Background Information

POLL (DNA polymerase lambda) functions in DNA repair (PMID: 11457865, PMID: 19806195, PMID: 20693240, PMID: 30250067). POLL has 5-prime-deoxyribose-5-phosphate lyase activity and strand-displacement synthesis activity on gapped DNA substrates, indicating that POLL participates in short- and long-patch base excision repair. POLL is involved in base excision repair (BER) responsible for repair of lesions that give rise to abasic (AP) sites in DNA (PMID: 11457865, PMID: 19806195).

## Storage

**Storage:**  
Store at -80°C.

**Storage Buffer:**  
PBS only, pH7.3

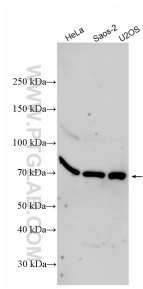
For technical support and original validation data for this product please contact:

T: 1 (888) 4PTGLAB (1-888-478-4522) (toll free in USA), or 1(312) 455-8498 (outside USA)

E: [proteintech@ptglab.com](mailto:proteintech@ptglab.com)  
W: [ptglab.com](http://ptglab.com)

**This product is exclusively available under Proteintech Group brand and is not available to purchase from any other manufacturer.**

## Selected Validation Data



Various lysates were subjected to SDS PAGE followed by western blot with 14671-1-AP (POLL antibody) at dilution of 1:2000 incubated at room temperature for 1.5 hours. This data was developed using the same antibody clone with 14671-1-PBS in a different storage buffer formulation.