

For Research Use Only

Septin 11 Polyclonal antibody

Catalog Number: 14672-1-AP

6 Publications



Basic Information

Catalog Number:

14672-1-AP

Size:

150ul, Concentration: 350 ug/ml by Nanodrop and 347 ug/ml by Bradford method using BSA as the standard;

Source:

Rabbit

Isotype:

IgG

Immunogen Catalog Number:

AG6342

GenBank Accession Number:

BC063615

GeneID (NCBI):

55752

UNIPROT ID:

Q9NVA2

Full Name:

septin 11

Calculated MW:

49 kDa

Observed MW:

48 kDa

Purification Method:

Antigen affinity purification

Recommended Dilutions:

WB 1:500-1:3000

IP 0.5-4.0 ug for 1.0-3.0 mg of total protein lysate

IHC 1:20-1:200

IF/ICC 1:20-1:200

Applications

Tested Applications:

WB, IHC, IF/ICC, FC (Intra), IP, ELISA

Cited Applications:

WB, IF, IP, ColP, RIP

Species Specificity:

human, mouse, rat

Cited Species:

human, mouse

Note-IHC: suggested antigen retrieval with TE buffer pH 9.0; (*) Alternatively, antigen retrieval may be performed with citrate buffer pH 6.0

Positive Controls:

WB: human brain tissue, HeLa cells, HT-1080 cells, mouse brain tissue, mouse colon tissue, mouse small intestine tissue, SH-SY5Y cells

IP: mouse brain tissue,

IHC: human ovary tissue, human kidney tissue, human lung tissue, human spleen tissue

IF/ICC: HeLa cells, HepG2 cells

Notable Publications

Author	Pubmed ID	Journal	Application
Chi Hin Wong	32217695	Cancer Res	RIP
Katharina Neubauer	30019536	Cytoskeleton (Hoboken)	IF
Thomas C Panagiotou	36044846	Cell Rep	IF, WB

Storage

Storage:

Store at -20°C. Stable for one year after shipment.

Storage Buffer:

PBS with 0.02% sodium azide and 50% glycerol pH 7.3.

Aliquoting is unnecessary for -20°C storage

*** 20ul sizes contain 0.1% BSA

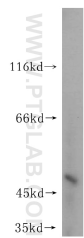
For technical support and original validation data for this product please contact:

T: 1 (888) 4PTGLAB (1-888-478-4522) (toll free in USA), or 1(312) 455-8498 (outside USA)

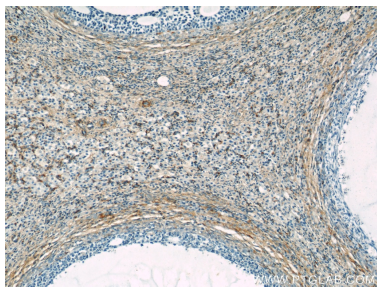
E: proteintech@ptglab.com
W: ptglab.com

This product is exclusively available under Proteintech Group brand and is not available to purchase from any other manufacturer.

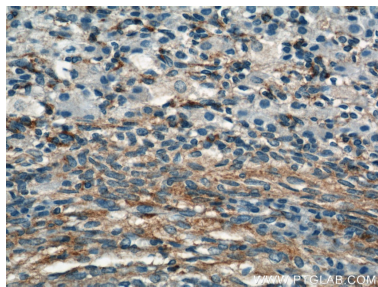
Selected Validation Data



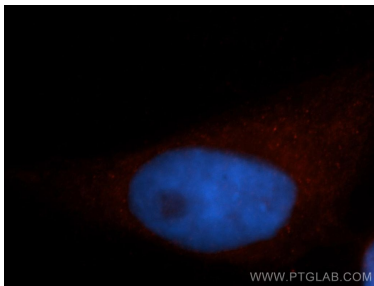
human brain tissue were subjected to SDS PAGE followed by western blot with 14672-1-AP (Septin 11 antibody) at dilution of 1:1000 incubated at room temperature for 1.5 hours.



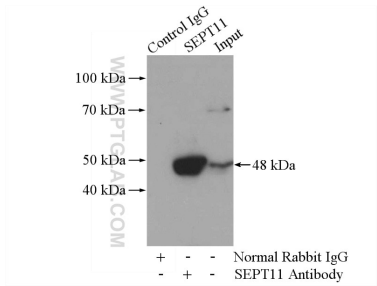
Immunohistochemical analysis of paraffin-embedded human ovary using 14672-1-AP (Septin 11 antibody) at dilution of 1:50 (under 10x lens).



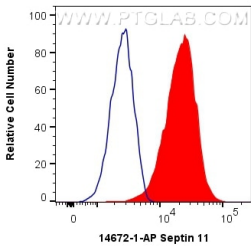
Immunohistochemical analysis of paraffin-embedded human ovary using 14672-1-AP (Septin 11 antibody) at dilution of 1:50 (under 40x lens).



Immunofluorescent analysis of HeLa cells, using Septin 11 antibody 14672-1-AP at 1:50 dilution and Rhodamine-labeled goat anti-rabbit IgG (red). Blue pseudocolor = DAPI (fluorescent DNA dye).



IP result of anti-Septin 11 (IP:14672-1-AP, 4ug; Detection:14672-1-AP 1:500) with mouse brain tissue lysate 3440ug.



1X10⁶ HeLa cells were intracellularly stained with 0.4 ug Anti-Human Septin 11 (14672-1-AP) and CoraLite®488-Conjugated Goat Anti-Rabbit IgG(H+L) at dilution 1:1000 (red), or 0.4 ug Isotype Control. Cells were fixed with 4% PFA and permeabilized with Flow Cytometry Perm Buffer (PF00011-C).