

For Research Use Only

ADHFE1 Polyclonal antibody

Catalog Number: 14674-1-AP

1 Publications



Basic Information

Catalog Number:

14674-1-AP

Size:

150ul, Concentration: 647 µg/ml by Bradford method using BSA as the standard;

Source:

Rabbit

Isotype:

IgG

Immunogen Catalog Number:

AG6382

GenBank Accession Number:

BC064634

GeneID (NCBI):

137872

UNIPROT ID:

Q8IWW8

Full Name:

alcohol dehydrogenase, iron containing, 1

Calculated MW:

50 kDa

Observed MW:

50 kDa, 45 kDa

Purification Method:

Antigen affinity purification

Recommended Dilutions:

WB 1:500-1:2000

IHC 1:100-1:400

Applications

Tested Applications:

IHC, WB, ELISA

Species Specificity:

human, mouse, rat

Note-IHC: suggested antigen retrieval with TE buffer pH 9.0; (*) Alternatively, antigen retrieval may be performed with citrate buffer pH 6.0

Positive Controls:

WB: rat kidney tissue, mouse heart tissue

IHC: human colon tissue, human colon cancer tissue, human liver tissue

Background Information

The ADHFE1 gene encodes hydroxyacid-oxoacid transhydrogenase which is responsible for the oxidation of 4-hydroxybutyrate in mammalian tissues. It belongs to the iron-containing alcohol dehydrogenase family. ADHFE1 has 4 isoforms produced by alternative splicing with the MW of 50, 45, 32, 27 kDa.

Notable Publications

Author	Pubmed ID	Journal	Application
Holger Husi	24573165	Circ Cardiovasc Genet	

Storage

Storage:

Store at -20°C. Stable for one year after shipment.

Storage Buffer:

PBS with 0.02% sodium azide and 50% glycerol pH 7.3.

Aliquoting is unnecessary for -20°C storage

*** 20ul sizes contain 0.1% BSA

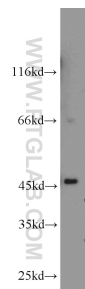
For technical support and original validation data for this product please contact:

T: 1 (888) 4PTGLAB (1-888-478-4522) (toll free in USA), or 1(312) 455-8498 (outside USA)

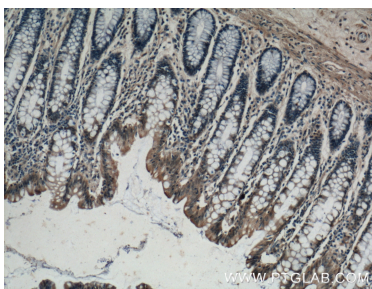
E: proteintech@ptglab.com
W: ptglab.com

This product is exclusively available under Proteintech Group brand and is not available to purchase from any other manufacturer.

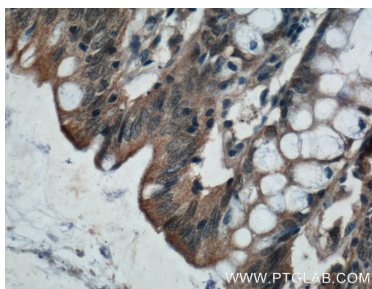
Selected Validation Data



rat kidney tissue were subjected to SDS PAGE followed by western blot with 14674-1-AP (ADHFE1 antibody) at dilution of 1:1000 incubated at room temperature for 1.5 hours.



Immunohistochemical analysis of paraffin-embedded human colon tissue slide using 14674-1-AP (ADHFE1 Antibody) at dilution of 1:200 (under 10x lens).



Immunohistochemical analysis of paraffin-embedded human colon tissue slide using 14674-1-AP (ADHFE1 Antibody) at dilution of 1:200 (under 40x lens).