

For Research Use Only

# IgG Kappa Light Chain Polyclonal antibody

Catalog Number: 14678-1-AP

17 Publications



## Basic Information

Catalog Number:

14678-1-AP

Size:

150ul, Concentration: 500 ug/ml by Nanodrop;

Source:

Rabbit

Isotype:

IgG

Immunogen Catalog Number:

AG6389

GenBank Accession Number:

BC030813

GeneID (NCBI):

50802

Full Name:

immunoglobulin kappa locus

Calculated MW:

26 kDa

Observed MW:

26 kDa

Purification Method:

Antigen affinity purification

Recommended Dilutions:

WB 1:500-1:2000

IHC 1:20-1:200

## Applications

Tested Applications:

WB, IHC, ELISA

Cited Applications:

WB, IHC, IF, IP, CoIP, ChIP, RIP

Species Specificity:

human, mouse

Cited Species:

human

**Note-IHC: suggested antigen retrieval with TE buffer pH 9.0; (\*) Alternatively, antigen retrieval may be performed with citrate buffer pH 6.0**

Positive Controls:

**WB** : human plasma tissue, human liver tissue, mouse skeletal muscle tissue

**IHC** : human spleen tissue, human heart tissue, human placenta tissue, human skin tissue, human testis tissue, mouse spleen tissue

## Background Information

This antibody detects the light chain (Kappa) of human IgG.

## Notable Publications

Author	Pubmed ID	Journal	Application
Wei Guo	36162205	EBioMedicine	IF
Lanjuan Shen	35333985	J Bone Miner Metab	RIP
Hyun-Jin Na	35294432	PLoS Genet	IHC

## Storage

Storage:

Store at -20°C. Stable for one year after shipment.

Storage Buffer:

PBS with 0.02% sodium azide and 50% glycerol pH 7.3.

Aliquoting is unnecessary for -20°C storage

\*\*\* 20ul sizes contain 0.1% BSA

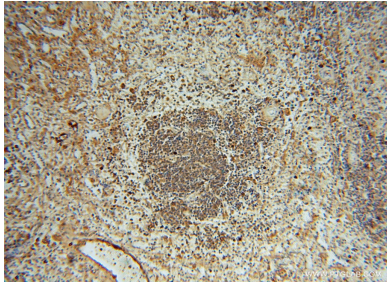
For technical support and original validation data for this product please contact:

T: 1 (888) 4PTGLAB (1-888-478-4522) (toll free in USA), or 1(312) 455-8498 (outside USA)

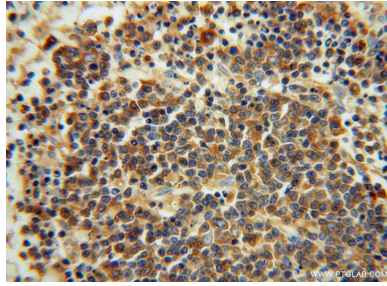
E: [proteintech@ptglab.com](mailto:proteintech@ptglab.com)  
W: [ptglab.com](http://ptglab.com)

This product is exclusively available under Proteintech Group brand and is not available to purchase from any other manufacturer.

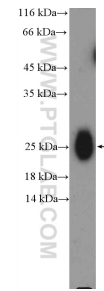
## Selected Validation Data



Immunohistochemical analysis of paraffin-embedded human spleen using 14678-1-AP (IgG light chain (Kappa) antibody) at dilution of 1:100 (under 10x lens).



Immunohistochemical analysis of paraffin-embedded human spleen using 14678-1-AP (IgG light chain (Kappa) antibody) at dilution of 1:100 (under 40x lens).



human plasma (0.3ug) were subjected to SDS PAGE followed by western blot with 14678-1-AP (IgG light chain (Kappa) Antibody) at dilution of 1:1000 incubated at room temperature for 1.5 hours.