

For Research Use Only

MTA3 Polyclonal antibody

Catalog Number: 14682-1-AP

Featured Product

15 Publications



Basic Information

Catalog Number:

14682-1-AP

Size:

150ul, Concentration: 450 ug/ml by Nanodrop and 260 ug/ml by Bradford method using BSA as the standard;

Source:

Rabbit

Isotype:

IgG

Immunogen Catalog Number:

AG6400

GenBank Accession Number:

BC053631

GeneID (NCBI):

57504

UNIPROT ID:

Q9BTC8

Full Name:

metastasis associated 1 family, member 3

Calculated MW:

68 kDa

Observed MW:

62 kDa, 68 kDa

Purification Method:

Antigen affinity purification

Recommended Dilutions:

WB 1:2000-1:10000

IP 0.5-4.0 ug for 1.0-3.0 mg of total protein lysate

IHC 1:250-1:1000

IF/ICC 1:200-1:800

Applications

Tested Applications:

WB, IHC, IF/ICC, IP, ELISA

Cited Applications:

WB, IHC, IP

Species Specificity:

human, mouse, rat

Cited Species:

human, mouse

Note-IHC: suggested antigen retrieval with TE buffer pH 9.0; (*) Alternatively, antigen retrieval may be performed with citrate buffer pH 6.0

Positive Controls:

WB : HepG2 cells, mouse thymus tissue, Jurkat cells, MCF-7 cells, Raji cells

IP : Raji cells,

IHC : mouse brain tissue,

IF/ICC : U-251 cells,

Background Information

The metastasis-associated (MTA) family contains three members, MTA1, MTA2 and MTA3 (PMID:12167865). Metastasis-associated protein 3 (MTA3) is a cell-type specific component of the Mi-2-NURD transcriptional co-repressor complex. It has a role in maintenance of the normal epithelial architecture through the repression of SNAIL1 transcription in a histone deacetylase-dependent manner, and thus the regulation of E-cadherin levels.

Notable Publications

Author	Pubmed ID	Journal	Application
Jinzhong Qin	22770845	Cell Stem Cell	WB
Poyee Lau	36050478	Cell Mol Immunol	IHC, WB
Cai Lv	33059651	BMC Urol	IHC

Storage

Storage:

Store at -20°C. Stable for one year after shipment.

Storage Buffer:

PBS with 0.02% sodium azide and 50% glycerol pH 7.3.

Aliquoting is unnecessary for -20°C storage

*** 20ul sizes contain 0.1% BSA

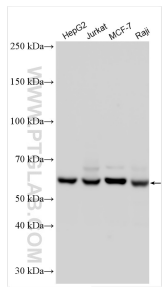
For technical support and original validation data for this product please contact:

T: 1 (888) 4PTGLAB (1-888-478-4522) (toll free in USA), or 1(312) 455-8498 (outside USA)

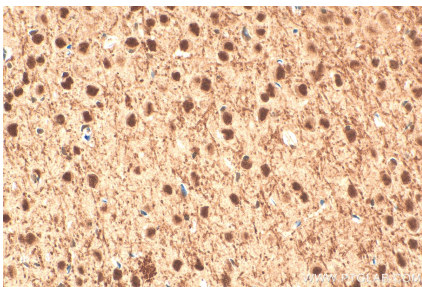
E: proteintech@ptglab.com
W: ptglab.com

This product is exclusively available under Proteintech Group brand and is not available to purchase from any other manufacturer.

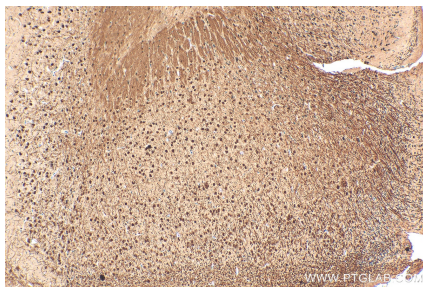
Selected Validation Data



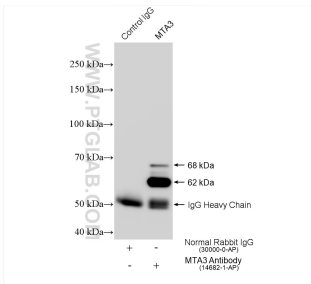
Various lysates were subjected to SDS PAGE followed by western blot with 14682-1-AP (MTA3 antibody) at dilution of 1:5000 incubated at room temperature for 1.5 hours.



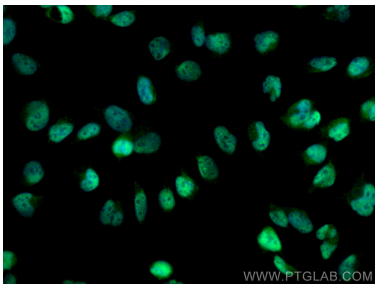
Immunohistochemical analysis of paraffin-embedded mouse brain tissue slide using 14682-1-AP (MTA3 antibody) at dilution of 1:500 (under 40x lens). Heat mediated antigen retrieval with Tris-EDTA buffer (pH 9.0).



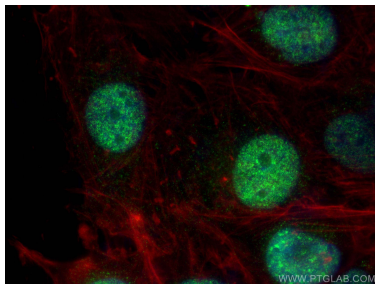
Immunohistochemical analysis of paraffin-embedded mouse brain tissue slide using 14682-1-AP (MTA3 antibody) at dilution of 1:500 (under 10x lens). Heat mediated antigen retrieval with Tris-EDTA buffer (pH 9.0).



IP result of anti-MTA3 (IP:14682-1-AP, 4ug; Detection:14682-1-AP 1:3000) with Raji cells lysate 2840 ug.



Immunofluorescent analysis of (4% PFA) fixed U-251 cells using MTA3 antibody (14682-1-AP) at dilution of 1:400 and CoraLite®488-Conjugated AffiniPure Goat Anti-Rabbit IgG(H+L) (SA00013-2).



Immunofluorescent analysis of (4% PFA) fixed U-251 cells using MTA3 antibody (14682-1-AP) at dilution of 1:600 and Multi-rAb CoraLite® Plus 488-Goat Anti-Rabbit Recombinant Secondary Antibody (H+L) (RGAR002), CL594-phalloidin (red).