

For Research Use Only

MTA3 Polyclonal antibody, PBS Only

Catalog Number: 14682-1-PBS

Featured Product



Basic Information

Catalog Number:

14682-1-PBS

Size:

100ug, Concentration: 1 mg/ml by Nanodrop;

Source:

Rabbit

Isotype:

IgG

Immunogen Catalog Number:

AG6400

GenBank Accession Number:

BC053631

GeneID (NCBI):

57504

UNIPROT ID:

Q9BTC8

Full Name:

metastasis associated 1 family, member 3

Calculated MW:

68 kDa

Observed MW:

62 kDa, 68 kDa

Purification Method:

Antigen affinity purification

Applications

Tested Applications:

WB, IHC, IF/ICC, IP, Indirect ELISA

Species Specificity:

human, mouse, rat

Background Information

The metastasis-associated (MTA) family contains three members, MTA1, MTA2 and MTA3 (PMID:12167865). Metastasis-associated protein 3 (MTA3) is a cell-type specific component of the Mi-2-NURD transcriptional co-repressor complex. It has a role in maintenance of the normal epithelial architecture through the repression of SNAIL1 transcription in a histone deacetylase-dependent manner, and thus the regulation of E-cadherin levels.

Storage

Storage:

Store at -80°C.

Storage Buffer:

PBS Only

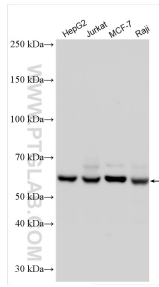
For technical support and original validation data for this product please contact:

T: 1 (888) 4PTGLAB (1-888-478-4522) (toll free in USA), or 1(312) 455-8498 (outside USA)

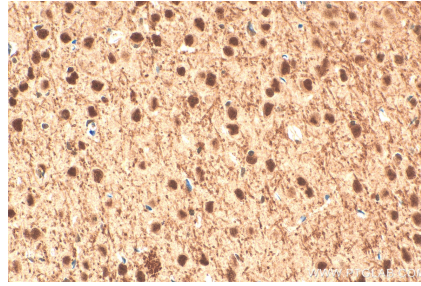
E: proteintech@ptglab.com
W: ptglab.com

This product is exclusively available under Proteintech Group brand and is not available to purchase from any other manufacturer.

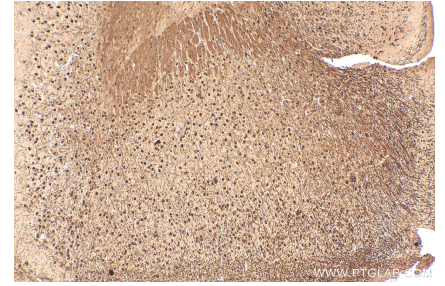
Selected Validation Data



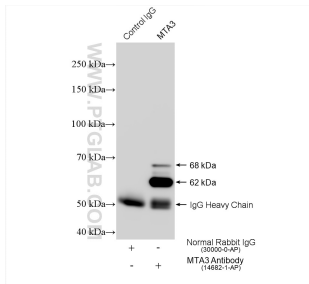
Various lysates were subjected to SDS PAGE followed by western blot with 14682-1-AP (MTA3 antibody) at dilution of 1:5000 incubated at room temperature for 1.5 hours. This data was developed using the same antibody clone with 14682-1-PBS in a different storage buffer formulation.



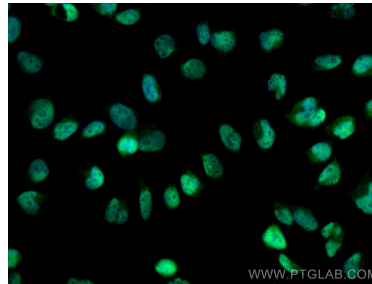
Immunohistochemical analysis of paraffin-embedded mouse brain tissue slide using 14682-1-AP (MTA3 antibody) at dilution of 1:500 (under 40x lens). Heat mediated antigen retrieval with Tris-EDTA buffer (pH 9.0). This data was developed using the same antibody clone with 14682-1-PBS in a different storage buffer formulation.



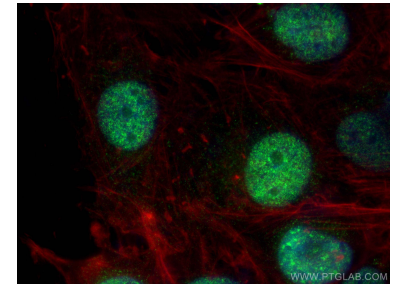
Immunohistochemical analysis of paraffin-embedded mouse brain tissue slide using 14682-1-AP (MTA3 antibody) at dilution of 1:500 (under 10x lens). Heat mediated antigen retrieval with Tris-EDTA buffer (pH 9.0). This data was developed using the same antibody clone with 14682-1-PBS in a different storage buffer formulation.



IP result of anti-MTA3 (IP:14682-1-AP, 4ug; Detection:14682-1-AP 1:3000) with Raji cells lysate 2840 ug. This data was developed using the same antibody clone with 14682-1-PBS in a different storage buffer formulation.



Immunofluorescent analysis of (4% PFA) fixed U-251 cells using MTA3 antibody (14682-1-AP) at dilution of 1:400 and CoraLite@488-Conjugated AffiniPure Goat Anti-Rabbit IgG(H+L) (SA00013-2). This data was developed using the same antibody clone with 14682-1-PBS in a different storage buffer formulation.



Immunofluorescent analysis of (4% PFA) fixed U-251 cells using MTA3 antibody (14682-1-AP) at dilution of 1:600 and Multi-rAb CoraLite @ Plus 488-Goat Anti-Rabbit Recombinant Secondary Antibody (H+L) (RGAR002), CL594-phalloidin (red). This data was developed using the same antibody clone with 14682-1-PBS in a different storage buffer formulation.