

For Research Use Only

SLC44A1 Polyclonal antibody

Catalog Number: 14687-1-AP

Featured Product

5 Publications



Basic Information

Catalog Number:

14687-1-AP

Size:

150ul, Concentration: 600 µg/ml by Nanodrop;

Source:

Rabbit

Isotype:

IgG

Immunogen Catalog Number:

AG6024

GenBank Accession Number:

BC049203

GeneID (NCBI):

23446

UNIPROT ID:

Q8WWI5

Full Name:

solute carrier family 44, member 1

Calculated MW:

73 kDa

Observed MW:

70-73 kDa

Purification Method:

Antigen affinity purification

Recommended Dilutions:

WB 1:1000-1:4000

IHC 1:50-1:500

Applications

Tested Applications:

WB, IHC, ELISA

Cited Applications:

WB, IHC, IF

Species Specificity:

human

Cited Species:

human, mouse

Note-IHC: suggested antigen retrieval with TE buffer pH 9.0; (*) Alternatively, antigen retrieval may be performed with citrate buffer pH 6.0

Positive Controls:

WB : 37°C incubated HeLa cells, HEK-293 cells

IHC : human lung cancer tissue,

Background Information

SLC44A1, also referred to as choline transporter-like protein 1 (CTL1) or CDw92, is a choline transporter detected in both the plasma and mitochondrial membranes where it transports choline at high affinity and in a Na⁺-independent manner.

Notable Publications

Author	Pubmed ID	Journal	Application
Yalong Wang	31753849	J Exp Med	IF
Elsa Sanchez-Lopez	30982734	Cell Metab	IF
Lingfeng Tong	38547864	Cell Metab	WB

Storage

Storage:

Store at -20°C. Stable for one year after shipment.

Storage Buffer:

PBS with 0.02% sodium azide and 50% glycerol pH 7.3.

Aliquoting is unnecessary for -20°C storage

*** 20ul sizes contain 0.1% BSA

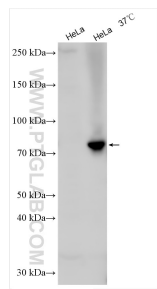
For technical support and original validation data for this product please contact:

T: 1 (888) 4PTGLAB (1-888-478-4522) (toll free in USA), or 1(312) 455-8498 (outside USA)

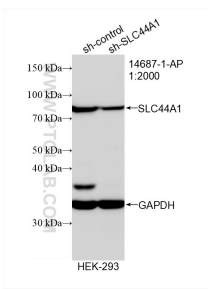
E: proteintech@ptglab.com
W: ptglab.com

This product is exclusively available under Proteintech Group brand and is not available to purchase from any other manufacturer.

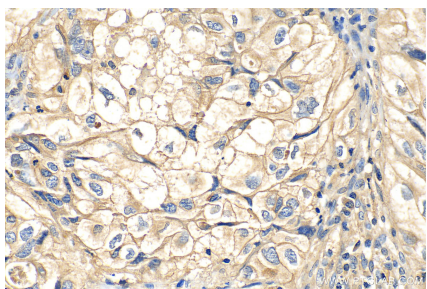
Selected Validation Data



HeLa lysates (heated at 100°C and 37°C) were subjected to SDS PAGE followed by western blot with 14687-1-AP (SLC44A1 antibody) at dilution of 1:2000 incubated at room temperature for 1.5 hours.



WB result of SLC44A1 antibody (14687-1-AP; 1:2000; incubated at room temperature for 1.5 hours) with sh-Control and sh-SLC44A1 transfected HEK-293 cells.



Immunohistochemical analysis of paraffin-embedded human lung cancer tissue slide using 14687-1-AP (SLC44A1 antibody) at dilution of 1:200 (under 40x lens). Heat mediated antigen retrieval with Tris-EDTA buffer (pH 9.0).