

For Research Use Only

# SLC44A1 Polyclonal antibody, PBS Only

Catalog Number: 14687-1-PBS

Featured Product



## Basic Information

Catalog Number:

14687-1-PBS

Size:

100ug, Concentration: 1 mg/ml by Nanodrop;

Source:

Rabbit

Isotype:

IgG

Immunogen Catalog Number:

AG6024

GenBank Accession Number:

BC049203

GeneID (NCBI):

23446

UNIPROT ID:

Q8WWI5

Full Name:

solute carrier family 44, member 1

Calculated MW:

73 kDa

Observed MW:

70-73 kDa

Purification Method:

Antigen affinity purification

## Applications

Tested Applications:

WB, IHC, Indirect ELISA

Species Specificity:

human

## Background Information

SLC44A1, also referred to as choline transporter-like protein 1 (CTL1) or CDw92, is a choline transporter detected in both the plasma and mitochondrial membranes where it transports choline at high affinity and in a Na<sup>+</sup>-independent manner.

## Storage

Storage:

Store at -80°C.

Storage Buffer:

PBS only, pH7.3

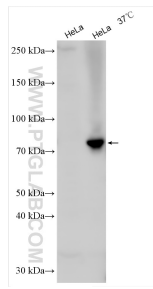
For technical support and original validation data for this product please contact:

T: 1 (888) 4PTGLAB (1-888-478-4522) (toll free in USA), or 1(312) 455-8498 (outside USA)

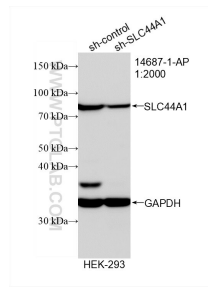
E: [proteintech@ptglab.com](mailto:proteintech@ptglab.com)  
W: [ptglab.com](http://ptglab.com)

This product is exclusively available under Proteintech Group brand and is not available to purchase from any other manufacturer.

## Selected Validation Data



HeLa lysates (heated at 100°C and 37°C) were subjected to SDS PAGE followed by western blot with 14687-1-AP (SLC44A1 antibody) at dilution of 1:2000 incubated at room temperature for 1.5 hours. This data was developed using the same antibody clone with 14687-1-PBS in a different storage buffer formulation.



WB result of SLC44A1 antibody (14687-1-AP; 1:2000; incubated at room temperature for 1.5 hours) with sh-Control and sh-SLC44A1 transfected HEK-293 cells. This data was developed using the same antibody clone with 14687-1-PBS in a different storage buffer formulation.