

For Research Use Only

DIS3 Polyclonal antibody

Catalog Number: 14689-1-AP

Featured Product

12 Publications



Basic Information

Catalog Number:

14689-1-AP

Size:

150ul, Concentration: 600 ug/ml by Nanodrop;

Source:

Rabbit

Isotype:

IgG

Immunogen Catalog Number:

AG6117

GenBank Accession Number:

BC056143

GeneID (NCBI):

22894

UNIPROT ID:

Q9Y2L1

Full Name:

DIS3 mitotic control homolog (S. cerevisiae)

Calculated MW:

109 kDa

Observed MW:

110 kDa

Purification Method:

Antigen affinity purification

Recommended Dilutions:

WB 1:500-1:2000

IHC 1:50-1:500

IF/ICC 1:50-1:500

Applications

Tested Applications:

WB, IHC, IF/ICC, ELISA

Cited Applications:

WB, IHC, IF

Species Specificity:

human, mouse, rat

Cited Species:

human, mouse, drosophila

Note-IHC: suggested antigen retrieval with TE buffer pH 9.0; (*) Alternatively, antigen retrieval may be performed with citrate buffer pH 6.0

Positive Controls:

WB: HEK-293T cells, mouse ovary tissue, mouse testis tissue, HeLa cells, Jurkat cells

IHC: human ovary tumor tissue,

IF/ICC: HeLa cells,

Background Information

DIS3, also named as KIAA1008 and RRP44, belongs to the ribonuclease II (RNB) family. It is a component of the exosome 3'->5' exoribonuclease complex. DIS3 is required for the 3'-processing of the 7S pre-RNA to the mature nuclear complex. It is also associated with the GTPase Ran. DIS3 has a 3'-5' exonuclease activity.

Notable Publications

Author	Pubmed ID	Journal	Application
Tobias Moll	36241425	Life Sci Alliance	WB
Ilaria Gritti	36215697	EMBO J	WB
Shi Zhi-Zhou ZZ	23158542	BMC Med Genomics	IHC

Storage

Storage:

Store at -20°C. Stable for one year after shipment.

Storage Buffer:

PBS with 0.02% sodium azide and 50% glycerol pH 7.3.

Aliquoting is unnecessary for -20°C storage

*** 20ul sizes contain 0.1% BSA

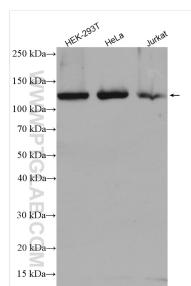
For technical support and original validation data for this product please contact:

T: 1 (888) 4PTGLAB (1-888-478-4522) (toll free in USA), or 1(312) 455-8498 (outside USA)

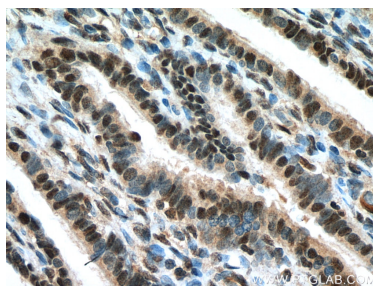
E: proteintech@ptglab.com
W: ptglab.com

This product is exclusively available under Proteintech Group brand and is not available to purchase from any other manufacturer.

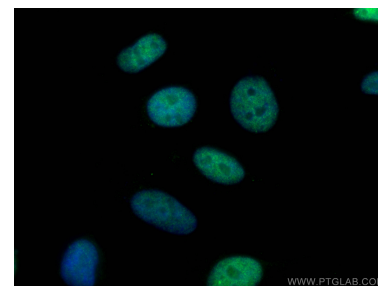
Selected Validation Data



Various lysates were subjected to SDS PAGE followed by western blot with 14689-1-AP (DIS3 antibody) at dilution of 1:1000 incubated at room temperature for 1.5 hours.



Immunohistochemical analysis of paraffin-embedded human ovary tumor tissue slide using 14689-1-AP (DIS3 antibody) at dilution of 1:200 (under 40x lens). Heat mediated antigen retrieval with Tris-EDTA buffer (pH 9.0).



Immunofluorescent analysis of (4% PFA) fixed HeLa cells using DIS3 antibody (14689-1-AP) at dilution of 1:200 and CoraLite®488-Conjugated Goat Anti-Rabbit IgG(H+L).