

For Research Use Only

NKRF Polyclonal antibody

Catalog Number: 14693-1-AP

Featured Product

4 Publications



Basic Information

Catalog Number:

14693-1-AP

Size:

150ul, Concentration: 450 ug/ml by Nanodrop and 267 ug/ml by Bradford method using BSA as the standard;

Source:

Rabbit

Isotype:

IgG

Immunogen Catalog Number:

AG6252

GenBank Accession Number:

BC068514

GeneID (NCBI):

55922

UNIPROT ID:

O15226

Full Name:

NFKB repressing factor

Calculated MW:

78 kDa

Observed MW:

100 kDa

Purification Method:

Antigen affinity purification

Recommended Dilutions:

WB 1:5000-1:50000

IP 0.5-4.0 ug for 1.0-3.0 mg of total protein lysate

Applications

Tested Applications:

WB, IP, ELISA

Cited Applications:

WB, IF, CoIP, ChIP

Species Specificity:

human, mouse, rat

Cited Species:

human, mouse

Positive Controls:

WB : HeLa cells, HEK-293 cells, HepG2 cells, Jurkat cells

IP : HeLa cells,

Background Information

NKRF, also named as Protein ITBA4 or Transcription factor NRF, is a 690 amino acid protein, which contains one G-patch domain and one R3H domain. NKRF is Widely and constitutively expressed, with lower level in colon, peripheral blood lymphocytes, lung and kidney. NKRF interacts with a specific negative regulatory element (NRE) 5'-AATTCCTCTGA-3' to mediate transcriptional repression of certain NK-kappa-B responsive genes. NKRF is involved in the constitutive silencing of the IFN- β promoter, independently of the virus-induced signals, and in the inhibition of the basal and cytokine-induced iNOS promoter activity.

Notable Publications

| Author | Pubmed ID | Journal | Application |
|----------------|-----------|---------------|-------------|
| Xi Jin | 32393270 | Mol Cancer | WB |
| Huang Lisong L | 23808420 | Immunology | WB |
| Yamin Liu | 38612387 | Int J Mol Sci | WB |

Storage

Storage:

Store at -20°C. Stable for one year after shipment.

Storage Buffer:

PBS with 0.02% sodium azide and 50% glycerol pH 7.3.

Aliquoting is unnecessary for -20°C storage

*** 20ul sizes contain 0.1% BSA

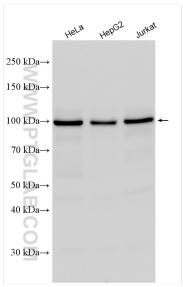
For technical support and original validation data for this product please contact:

T: 1 (888) 4PTGLAB (1-888-478-4522) (toll free in USA), or 1(312) 455-8498 (outside USA)

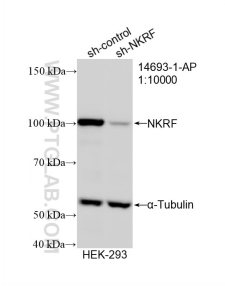
E: proteintech@ptglab.com
W: ptglab.com

This product is exclusively available under Proteintech Group brand and is not available to purchase from any other manufacturer.

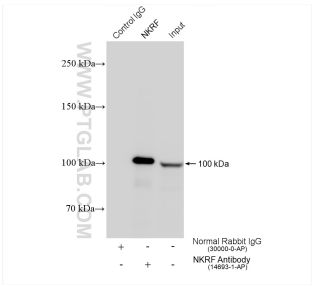
Selected Validation Data



Various lysates were subjected to SDS PAGE followed by western blot with 14693-1-AP (NKRF antibody) at dilution of 1:15000 incubated at room temperature for 1.5 hours.



WB result of NKRF antibody (14693-1-AP; 1:10000; incubated at room temperature for 1.5 hours) with sh-Control and sh-NKRF transfected HEK-293 cells.



IP result of anti-NKRF (IP:14693-1-AP, 4 μ g; Detection:14693-1-AP 1:10000) with HeLa cells lysate 840 μ g.