

For Research Use Only

AMN1 Polyclonal antibody, PBS Only

Catalog Number: 14694-1-PBS



Basic Information

Catalog Number: 14694-1-PBS	GenBank Accession Number: BC067906	Purification Method: Antigen affinity purification
Size: 100ug, Concentration: 1 mg/ml by Nanodrop;	GeneID (NCBI): 196394	
Source: Rabbit	UNIPROT ID: Q8IY45	
Isotype: IgG	Full Name: antagonist of mitotic exit network 1 homolog (S. cerevisiae)	
Immunogen Catalog Number: AG6257	Calculated MW: 28 kDa	
	Observed MW: 28 kDa	

Applications

Tested Applications:
WB, IHC, Indirect ELISA

Species Specificity:
human, mouse, rat

Background Information

AMN1, also known as the antagonist of mitotic exit network 1 homolog, is a protein-coding gene that plays a significant role in regulating cell division and mitotic exit in *Saccharomyces cerevisiae* (baker's yeast). AMN1 is an atypical F-box protein involved in the regulation of the MEN pathway. It acts as an antagonist by disrupting the formation of the Tem1/Cdc15 complex, which is crucial for mitotic exit. Specifically, AMN1 competes with Cdc15 for binding to Tem1, thereby turning off the MEN pathway. AMN1 is essential for cell separation after cytokinesis. It inhibits the transcription factor Ace2, leading to the downregulation of Ace2 target genes. This inhibition prevents septum cleavage and results in post-mitotic cell separation inhibition, causing cell clumping.

Storage

Storage:
Store at -80°C.

Storage Buffer:
PBS Only

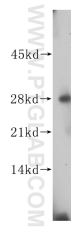
For technical support and original validation data for this product please contact:

T: 1 (888) 4PTGLAB (1-888-478-4522) (toll free in USA), or 1(312) 455-8498 (outside USA)

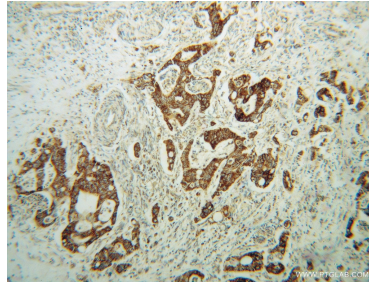
E: proteintech@ptglab.com
W: ptglab.com

This product is exclusively available under Proteintech Group brand and is not available to purchase from any other manufacturer.

Selected Validation Data



human colon tissue were subjected to SDS PAGE followed by western blot with 14694-1-AP (AMN1 antibody) at dilution of 1:400 incubated at room temperature for 1.5 hours. This data was developed using the same antibody clone with 14694-1-PBS in a different storage buffer formulation.



Immunohistochemical analysis of paraffin-embedded human colon cancer using 14694-1-AP (AMN1 antibody) at dilution of 1:100 (under 10x lens). This data was developed using the same antibody clone with 14694-1-PBS in a different storage buffer formulation.