

For Research Use Only

KCNAB1 Polyclonal antibody

Catalog Number: 14697-1-AP



Basic Information

Catalog Number: 14697-1-AP	GenBank Accession Number: BC043166	Purification Method: Antigen affinity purification
Size: 150ul , Concentration: 750 µg/ml by Nanodrop and 347 µg/ml by Bradford method using BSA as the standard;	GeneID (NCBI): 7881	Recommended Dilutions: WB 1:300-1:1500 IHC 1:20-1:200 IF 1:20-1:200
Source: Rabbit	Full Name: potassium voltage-gated channel, shaker-related subfamily, beta member 1	
Isotype: IgG	Calculated MW: 47 kDa	
Immunogen Catalog Number: AG6339	Observed MW: 68 kDa	

Applications

Tested Applications: IF, IHC, WB, ELISA	Positive Controls:
Species Specificity: human, mouse, rat	WB: mouse heart tissue, Neuro-2a cells
Note-IHC: <i>suggested antigen retrieval with TE buffer pH 9.0; (*) Alternatively, antigen retrieval may be performed with citrate buffer pH 6.0</i>	IHC: human brain tissue,
	IF: HeLa cells,

Background Information

Storage

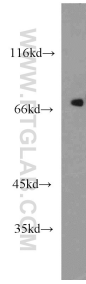
Storage:
Store at -20°C. Stable for one year after shipment.
Storage Buffer:
PBS with 0.02% sodium azide and 50% glycerol pH 7.3.
Aliquoting is unnecessary for -20°C storage

*** 20ul sizes contain 0.1% BSA

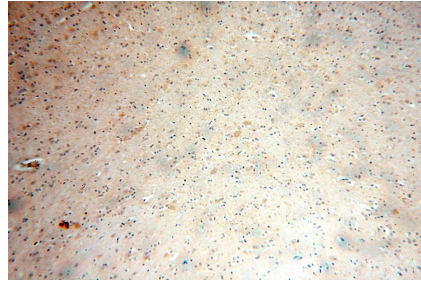
For technical support and original validation data for this product please contact:
T: 1 (888) 4PTGLAB (1-888-478-4522) (toll free in USA), or 1(312) 455-8498 (outside USA) E: proteintech@ptglab.com
W: ptglab.com

This product is exclusively available under Proteintech Group brand and is not available to purchase from any other manufacturer.

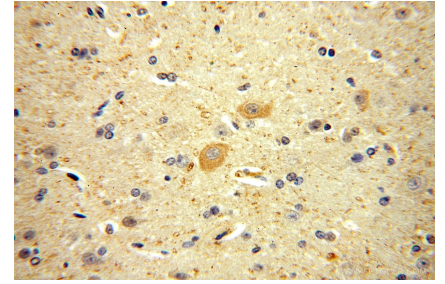
Selected Validation Data



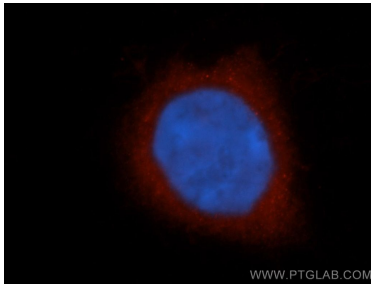
mouse heart tissue were subjected to SDS PAGE followed by western blot with 14697-1-AP (KCNAB1 antibody) at dilution of 1:1500 incubated at room temperature for 1.5 hours.



Immunohistochemical analysis of paraffin-embedded human brain using 14697-1-AP (KCNAB1 antibody) at dilution of 1:100 (under 10x lens).



Immunohistochemical analysis of paraffin-embedded human brain using 14697-1-AP (KCNAB1 antibody) at dilution of 1:100 (under 40x lens).



Immunofluorescent analysis of HeLa cells, using KCNAB1 antibody 14697-1-AP at 1:50 dilution and Rhodamine-labeled goat anti-rabbit IgG (red). Blue pseudocolor = DAPI (fluorescent DNA dye).