

For Research Use Only

RNMTL1 Polyclonal antibody

Catalog Number: 14707-1-AP

Featured Product

1 Publications



Basic Information

Catalog Number: 14707-1-AP	GenBank Accession Number: BC050614	Purification Method: Antigen affinity purification
Size: 150ul , Concentration: 700 µg/ml by Nanodrop and 400 µg/ml by Bradford method using BSA as the standard;	GeneID (NCBI): 55178	Recommended Dilutions: WB 1:1000-1:5000 IHC 1:50-1:500 IF 1:50-1:500
Source: Rabbit	Full Name: RNA methyltransferase like 1	
Isotype: IgG	Calculated MW: 47 kDa	
Immunogen Catalog Number: AG6399	Observed MW: 47 kDa	

Applications

Tested Applications: IF, IHC, WB, ELISA	Positive Controls: WB : HeLa cells, HEK-293 cells IHC : human liver tissue, IF : HeLa cells,
Cited Applications: IF, WB	
Species Specificity: human	
Cited Species: human, mouse	
Note-IHC: suggested antigen retrieval with TE buffer pH 9.0; (*) Alternatively, antigen retrieval may be performed with citrate buffer pH 6.0	

Background Information

The RNA methyltransferase like 1 gene (RNMTL1) is one of thirteen newly discovered genes within a 116 Kb segment of the chromosome 17p13.3, which suffers from a high frequent loss of heterozygosity in human hepatocellular carcinoma. Its amino acid sequence was identified a high conserved region with methylases from various microorganisms, suggesting to have function to transfer methyl group to rRNA molecule [PMID:12296377].

Notable Publications

Author	Pubmed ID	Journal	Application
Lee Ken-Wing KW	24036117	J Biol Chem	WB,IF

Storage

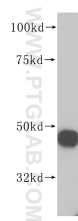
Storage:
Store at -20°C. Stable for one year after shipment.
Storage Buffer:
PBS with 0.02% sodium azide and 50% glycerol pH 7.3.
Aliquoting is unnecessary for -20°C storage

*** 20ul sizes contain 0.1% BSA

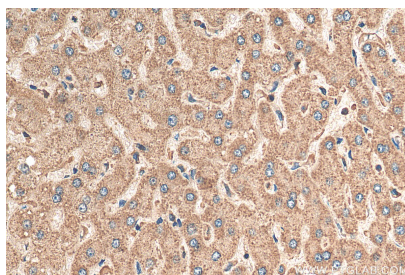
For technical support and original validation data for this product please contact:
T: 1 (888) 4PTGLAB (1-888-478-4522) (toll free in USA), or 1(312) 455-8498 (outside USA)
E: proteintech@ptglab.com
W: ptglab.com

This product is exclusively available under Proteintech Group brand and is not available to purchase from any other manufacturer.

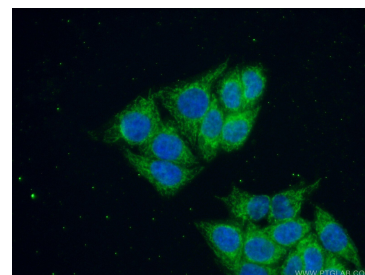
Selected Validation Data



HeLa cells were subjected to SDS PAGE followed by western blot with 14707-1-AP (RNMTL1 antibody) at dilution of 1:500 incubated at room temperature for 1.5 hours.



Immunohistochemical analysis of paraffin-embedded human liver tissue slide using 14707-1-AP (RNMTL1 antibody) at dilution of 1:200 (under 40x lens). Heat mediated antigen retrieval with Tris-EDTA buffer (pH 9.0).



Immunofluorescent analysis of (10% Formaldehyde) fixed HeLa cells using 14707-1-AP (RNMTL1 antibody) at dilution of 1:50 and Alexa Fluor 488-conjugated AffiniPure Goat Anti-Rabbit IgG(H+L).