

For Research Use Only

PAPSS1 Polyclonal antibody

Catalog Number: 14708-1-AP

4 Publications



Basic Information

Catalog Number:

14708-1-AP

Size:

150ul, Concentration: 600 ug/ml by Nanodrop and 280 ug/ml by Bradford method using BSA as the standard;

Source:

Rabbit

Isotype:

IgG

Immunogen Catalog Number:

AG6401

GenBank Accession Number:

BC050627

GeneID (NCBI):

9061

UNIPROT ID:

O43252

Full Name:

3'-phosphoadenosine 5'-phosphosulfate synthase 1

Calculated MW:

71 kDa

Observed MW:

70 kDa

Purification Method:

Antigen affinity purification

Recommended Dilutions:

WB 1:500-1:1000

IP 0.5-4.0 ug for 1.0-3.0 mg of total protein lysate

IHC 1:20-1:200

IF/ICC 1:400-1:1600

Applications

Tested Applications:

WB, IHC, IF/ICC, IP, ELISA

Cited Applications:

WB, IHC, IF, CoIP

Species Specificity:

human, mouse, rat

Cited Species:

human, hamster

Note-IHC: suggested antigen retrieval with TE buffer pH 9.0; (*) Alternatively, antigen retrieval may be performed with citrate buffer pH 6.0

Positive Controls:

WB : HepG2 cells, Jurkat cells

IP : HepG2 cells,

IHC : human ovary tumor tissue,

IF/ICC : U2OS cells,

Notable Publications

Author	Pubmed ID	Journal	Application
Ren Liu	34081410	Biotechnol J	WB
Wenying Zhu	28729416	Cancer Res	IF, CoIP
Dylan Calhoun	38765991	bioRxiv	WB

Storage

Storage:

Store at -20°C. Stable for one year after shipment.

Storage Buffer:

PBS with 0.02% sodium azide and 50% glycerol pH 7.3.

Aliquoting is unnecessary for -20°C storage

*** 20ul sizes contain 0.1% BSA

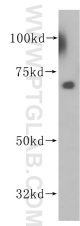
For technical support and original validation data for this product please contact:

T: 1 (888) 4PTGLAB (1-888-478-4522) (toll free in USA), or 1(312) 455-8498 (outside USA)

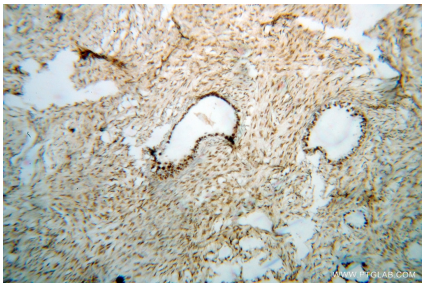
E: proteintech@ptglab.com
W: ptglab.com

This product is exclusively available under Proteintech Group brand and is not available to purchase from any other manufacturer.

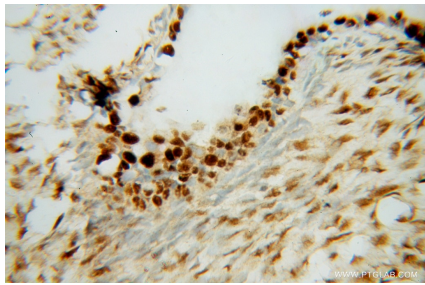
Selected Validation Data



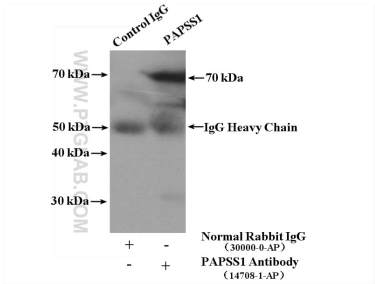
HepG2 cells were subjected to SDS PAGE followed by western blot with 14708-1-AP (PAPSS1 antibody) at dilution of 1:500 incubated at room temperature for 1.5 hours.



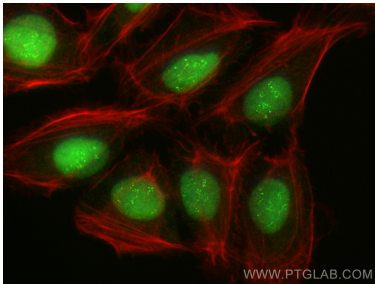
Immunohistochemical analysis of paraffin-embedded human ovary tumor using 14708-1-AP (PAPSS1 antibody) at dilution of 1:100 (under 10x lens).



Immunohistochemical analysis of paraffin-embedded human ovary tumor using 14708-1-AP (PAPSS1 antibody) at dilution of 1:100 (under 40x lens).



IP result of anti-PAPSS1 (IP:14708-1-AP, 4ug; Detection:14708-1-AP 1:1000) with HepG2 cells lysate 1000ug.



Immunofluorescent analysis of (4% PFA) fixed U2OS cells using PAPSS1 antibody (14708-1-AP) at dilution of 1:800 and CoraLite®488-Conjugated Goat Anti-Rabbit IgG(H+L) (SA00013-2), CL594-Phalloidin (red).