

## ERp72 Polyclonal antibody

Catalog Number: 14712-1-AP

Featured Product

38 Publications

## Basic Information

## Catalog Number:

14712-1-AP

## Size:

150ul, Concentration: 650 µg/ml by Nanodrop and 220 µg/ml by Bradford method using BSA as the standard;

## Source:

Rabbit

## Isotype:

IgG

## Immunogen Catalog Number:

AG6431

## GenBank Accession Number:

BC000425

## GeneID (NCBI):

9601

## UNIPROT ID:

P13667

## Full Name:

protein disulfide isomerase family A, member 4

## Calculated MW:

73 kDa

## Observed MW:

72 kDa

## Purification Method:

Antigen affinity purification

## Recommended Dilutions:

WB 1:2000-1:10000

IP 0.5-4.0 µg for 1.0-3.0 mg of total protein lysate

IHC 1:500-1:2000

IF 1:200-1:800

## Applications

## Tested Applications:

FC, IF, IHC, IP, WB, ELISA

## Cited Applications:

CoIP, IF, IHC, WB

## Species Specificity:

human, mouse, rat

## Cited Species:

human, mouse, monkey, pig

**Note-IHC: suggested antigen retrieval with TE buffer pH 9.0; (\*) Alternatively, antigen retrieval may be performed with citrate buffer pH 6.0**

## Positive Controls:

WB : mouse brain tissue, L02 cells, HeLa cells, HepG2 cells, mouse liver tissue, rat liver tissue

IP : HeLa cells,

IHC : human liver cancer tissue, human prostate cancer tissue

IF : A431 cells, PC-3 cells

## Background Information

PDIA4 (Protein disulfide-isomerase A4) is also named as ERP70, ERP72 and belongs to the protein disulfide isomerase family. It catalyzes the rearrangement of -S-S- bonds in proteins. ERp72 is a soluble protein localized in the ER lumen and contains the COOH-terminal retention signal, KEEL. There are 6 cysteine residues in the amino acid sequences of mouse and human ERp72. All of the cysteine residues occur in the internal thioredoxin motif, CGHC (PMID:15475357). The full length protein has a signal peptide with 20 amino acid.

## Notable Publications

Author	Pubmed ID	Journal	Application
Shifeng Tong	36181861	Cryobiology	IF
Feng Xing	36082822	Oncol Rep	IHC, WB
Nirav Florian Chhabra	34487921	Mol Metab	WB

## Storage

## Storage:

Store at -20°C. Stable for one year after shipment.

## Storage Buffer:

PBS with 0.02% sodium azide and 50% glycerol pH 7.3.

Aliquoting is unnecessary for -20°C storage

\*\*\* 20ul sizes contain 0.1% BSA

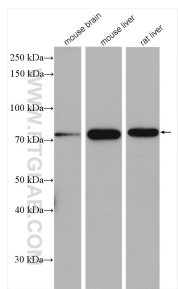
For technical support and original validation data for this product please contact:

T: 1 (888) 4PTGLAB (1-888-478-4522) (toll free in USA), or 1(312) 455-8498 (outside USA)

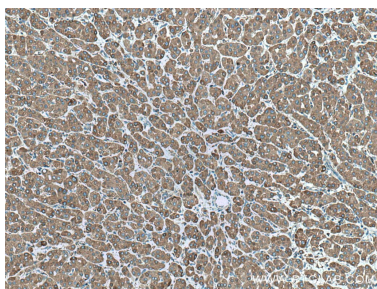
E: [proteintech@ptglab.com](mailto:proteintech@ptglab.com)  
W: [ptglab.com](http://ptglab.com)

This product is exclusively available under Proteintech Group brand and is not available to purchase from any other manufacturer.

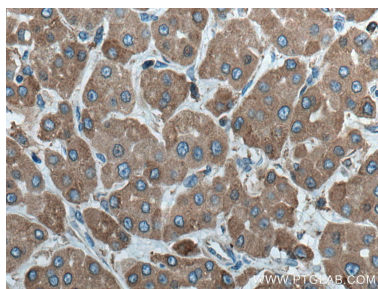
Selected Validation Data



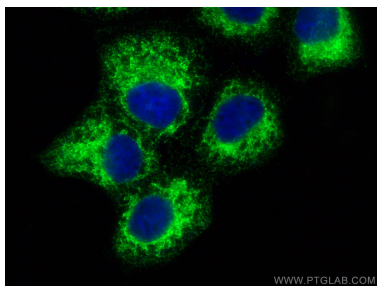
Various lysates were subjected to SDS PAGE followed by western blot with 14712-1-AP (ERp72 antibody) at dilution of 1:5000 incubated at room temperature for 1.5 hours.



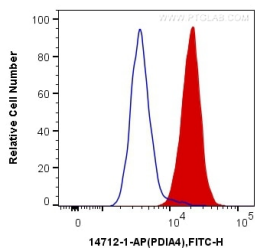
Immunohistochemical analysis of paraffin-embedded human liver cancer tissue slide using 14712-1-AP (ERp72 antibody) at dilution of 1:1000 (under 10x lens). Heat mediated antigen retrieval with Tris-EDTA buffer (pH 9.0).



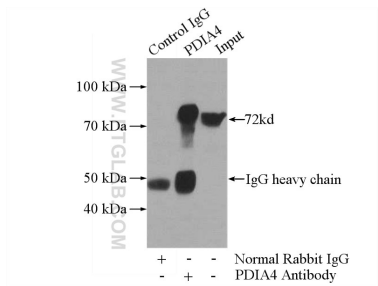
Immunohistochemical analysis of paraffin-embedded human liver cancer tissue slide using 14712-1-AP (ERp72 antibody) at dilution of 1:1000 (under 40x lens). Heat mediated antigen retrieval with Tris-EDTA buffer (pH 9.0).



Immunofluorescent analysis of (-20°C Ethanol) fixed A431 cells using ERp72 antibody (14712-1-AP) at dilution of 1:400 and CoraLite®488-Conjugated AffiniPure Goat Anti-Rabbit IgG(H+L) (SA00013-2).



1X10<sup>6</sup> HepG2 cells were intracellularly stained with 0.4 ug Anti-Human ERp72 (14712-1-AP) and CoraLite®488-Conjugated AffiniPure Goat Anti-Rabbit IgG(H+L) at dilution 1:1000 (red), or 0.4 ug Control Antibody. Cells were fixed with 4% PFA and permeabilized with Flow Cytometry Perm Buffer (PF00011-C).



IP result of anti-ERp72 (IP:14712-1-AP, 4ug; Detection:14712-1-AP 1:500) with HeLa cells lysate 2800ug.