

For Research Use Only

ERp72 Polyclonal antibody, PBS Only

Catalog Number: 14712-1-PBS

Featured Product



Basic Information

Catalog Number:

14712-1-PBS

Size:

100ug, Concentration: 1 mg/ml by Nanodrop;

Source:

Rabbit

Isotype:

IgG

Immunogen Catalog Number:

AG6431

GenBank Accession Number:

BC000425

GeneID (NCBI):

9601

UNIPROT ID:

P13667

Full Name:

protein disulfide isomerase family A, member 4

Calculated MW:

73 kDa

Observed MW:

72 kDa

Purification Method:

Antigen affinity purification

Applications

Tested Applications:

WB, IHC, IF/ICC, FC (Intra), IP, Indirect ELISA

Species Specificity:

human, mouse, rat

Background Information

PDIA4 (Protein disulfide-isomerase A4) is also named as ERP70, ERP72 and belongs to the protein disulfide isomerase family. It catalyzes the rearrangement of -S-S- bonds in proteins. ERp72 is a soluble protein localized in the ER lumen and contains the COOH-terminal retention signal, KEEL. There are 6 cysteine residues in the amino acid sequences of mouse and human ERp72. All of the cysteine residues occur in the internal thioredoxin motif, CGHC (PMID:15475357). The full length protein has a signal peptide with 20 amino acid.

Storage

Storage:

Store at -80°C.

Storage Buffer:

PBS Only

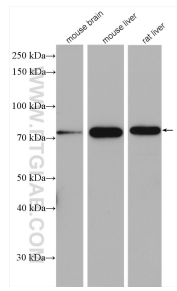
For technical support and original validation data for this product please contact:

T: 1 (888) 4PTGLAB (1-888-478-4522) (toll free in USA), or 1(312) 455-8498 (outside USA)

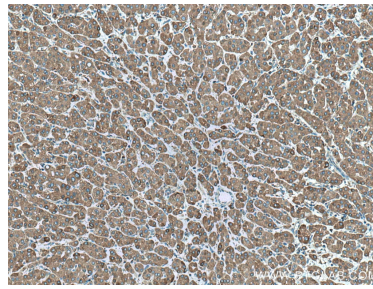
E: proteintech@ptglab.com
W: ptglab.com

This product is exclusively available under Proteintech Group brand and is not available to purchase from any other manufacturer.

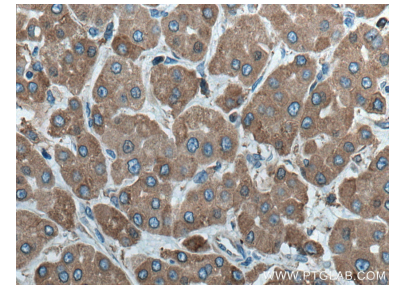
Selected Validation Data



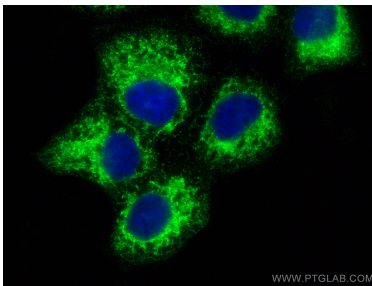
Various lysates were subjected to SDS PAGE followed by western blot with 14712-1-AP (ERp72 antibody) at dilution of 1:5000 incubated at room temperature for 1.5 hours. This data was developed using the same antibody clone with 14712-1-PBS in a different storage buffer formulation.



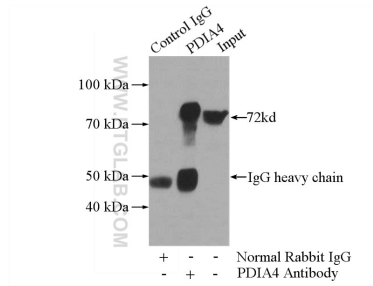
Immunohistochemical analysis of paraffin-embedded human liver cancer tissue slide using 14712-1-AP (ERp72 antibody) at dilution of 1:1000 (under 10x lens). Heat mediated antigen retrieval with Tris-EDTA buffer (pH 9.0). This data was developed using the same antibody clone with 14712-1-PBS in a different storage buffer formulation.



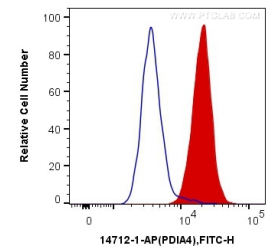
Immunohistochemical analysis of paraffin-embedded human liver cancer tissue slide using 14712-1-AP (ERp72 antibody) at dilution of 1:1000 (under 40x lens). Heat mediated antigen retrieval with Tris-EDTA buffer (pH 9.0). This data was developed using the same antibody clone with 14712-1-PBS in a different storage buffer formulation.



Immunofluorescent analysis of (-20°C Ethanol) fixed A431 cells using ERp72 antibody (14712-1-AP) at dilution of 1:400 and CoraLite®488-Conjugated AffiniPure Goat Anti-Rabbit IgG(H+L) (SA00013-2). This data was developed using the same antibody clone with 14712-1-PBS in a different storage buffer formulation.



IP result of anti-ERp72 (IP:14712-1-AP, 4ug; Detection:14712-1-AP 1:500) with HeLa cells lysate 2800ug. This data was developed using the same antibody clone with 14712-1-PBS in a different storage buffer formulation.



1X10⁶ HepG2 cells were intracellularly stained with 0.4 ug Anti-Human ERp72 (14712-1-AP) and CoraLite®488-Conjugated AffiniPure Goat Anti-Rabbit IgG(H+L) at dilution 1:1000 (red), or 0.4 ug Control Antibody. Cells were fixed with 4% PFA and permeabilized with Flow Cytometry Perm Buffer (PF00011-C). This data was developed using the same antibody clone with 14712-1-PBS in a different storage buffer formulation.