

For Research Use Only

MPP1 Polyclonal antibody

Catalog Number: 14715-1-AP

1 Publications



Basic Information

Catalog Number:

14715-1-AP

Size:

150ul, Concentration: 300 ug/ml by Nanodrop and 200 ug/ml by Bradford method using BSA as the standard;

Source:

Rabbit

Isotype:

IgG

Immunogen Catalog Number:

AG6439

GenBank Accession Number:

BC002392

GeneID (NCBI):

4354

UNIPROT ID:

Q00013

Full Name:

membrane protein, palmitoylated 1,

55kDa

Calculated MW:

52 kDa

Observed MW:

55 kDa

Purification Method:

Antigen affinity purification

Recommended Dilutions:

WB 1:500-1:2000

Applications

Tested Applications:

WB, ELISA

Cited Applications:

WB

Species Specificity:

human, mouse, rat

Cited Species:

mouse

Positive Controls:

WB : K-562 cells, mouse thymus tissue

Notable Publications

Author	Pubmed ID	Journal	Application
Rui Martins	27798618	Nat Immunol	WB

Storage

Storage:

Store at -20°C. Stable for one year after shipment.

Storage Buffer:

PBS with 0.02% sodium azide and 50% glycerol pH 7.3.

Aliquoting is unnecessary for -20°C storage

*** 20ul sizes contain 0.1% BSA

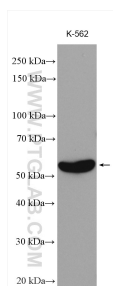
For technical support and original validation data for this product please contact:

T: 1 (888) 4PTGLAB (1-888-478-4522) (toll free in USA), or 1(312) 455-8498 (outside USA)

E: proteintech@ptglab.com
W: ptglab.com

This product is exclusively available under Proteintech Group brand and is not available to purchase from any other manufacturer.

Selected Validation Data



K-562 cells were subjected to SDS PAGE followed by western blot with 14715-1-AP (MPP1 antibody) at dilution of 1:1000 incubated at room temperature for 1.5 hours.