

PPP2R3A Polyclonal antibody

Catalog Number: 14720-1-AP

2 Publications

Basic Information

Catalog Number:

14720-1-AP

Size:

150ul , Concentration: 153 µg/ml by Bradford method using BSA as the standard;

Source:

Rabbit

Isotype:

IgG

Immunogen Catalog Number:

AG6450

GenBank Accession Number:

BC065531

GeneID (NCBI):

5523

UNIPROT ID:

Q06190

Full Name:

protein phosphatase 2 (formerly 2A), regulatory subunit B", alpha

Calculated MW:

130 kDa

Observed MW:

130 kDa

Purification Method:

Antigen affinity purification

Recommended Dilutions:

WB 1:500-1:2000

IHC 1:20-1:200

Applications

Tested Applications:

WB, IHC, ELISA

Cited Applications:

WB, IF

Species Specificity:

human

Cited Species:

human

Note-IHC: suggested antigen retrieval with TE buffer pH 9.0; (*) Alternatively, antigen retrieval may be performed with citrate buffer pH 6.0

Positive Controls:

WB : PC-3 cells, MCF-7 cells

IHC : human skin tissue, human brain tissue, human kidney tissue, human lung tissue, human ovary tissue, human placenta tissue, human spleen tissue, human testis tissue

Background Information

PPP2R3A(Serine/threonine-protein phosphatase 2A regulatory subunit B" subunit alpha), also named as PPP2R3, has 2 isoforms produced by alternative splicing named as PR130 and PR72. The protein contains stretches of basic residues that may be putative nuclear localization signals, and a cluster of proline residues in an N-terminal region common to both isoforms that the isoform PR130 but not PR72 is variably expressed in a number of tumor cell lines. The PR72 and PR130 cDNAs encode 72 and 130 kDa proteins when expressed in rabbit reticulocyte lysates. (PMID:8392071).

Notable Publications

Author	Pubmed ID	Journal	Application
Xiao-Nian Zhu	24412756	Cell Signal	WB
Xiaoni Shi	35933397	Cell Biosci	WB,IF

Storage

Storage:

Store at -20°C. Stable for one year after shipment.

Storage Buffer:

PBS with 0.02% sodium azide and 50% glycerol pH 7.3.

Aliquoting is unnecessary for -20°C storage

*** 20ul sizes contain 0.1% BSA

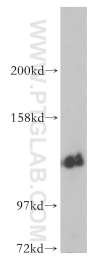
For technical support and original validation data for this product please contact:

T: 1 (888) 4PTGLAB (1-888-478-4522) (toll free in USA), or 1(312) 455-8498 (outside USA)

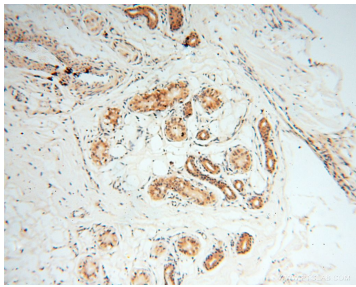
E: proteintech@ptglab.com
W: ptglab.com

This product is exclusively available under Proteintech Group brand and is not available to purchase from any other manufacturer.

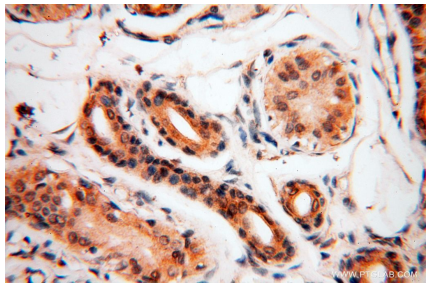
Selected Validation Data



PC-3 cells were subjected to SDS PAGE followed by western blot with 14720-1-AP (PPP2R3A antibody) at dilution of 1:300 incubated at room temperature for 1.5 hours.



Immunohistochemical analysis of paraffin-embedded human skin using 14720-1-AP (PPP2R3A antibody) at dilution of 1:100 (under 10x lens).



Immunohistochemical analysis of paraffin-embedded human skin using 14720-1-AP (PPP2R3A antibody) at dilution of 1:100 (under 40x lens).