

# PSMB7 Polyclonal antibody

Catalog Number: 14727-1-AP

3 Publications

## Basic Information

## Catalog Number:

14727-1-AP

## Size:

150ul, Concentration: 133 µg/ml by Bradford method using BSA as the standard;

## Source:

Rabbit

## Isotype:

IgG

## Immunogen Catalog Number:

AG6486

## GenBank Accession Number:

BC000509

## GeneID (NCBI):

5695

## UNIPROT ID:

Q99436

## Full Name:

proteasome (prosome, macropain) subunit, beta type, 7

## Calculated MW:

29.9 kDa

## Observed MW:

25-27 kDa

## Purification Method:

Antigen affinity purification

## Recommended Dilutions:

WB 1:200-1:1000

IHC 1:20-1:200

## Applications

## Tested Applications:

WB, IHC, ELISA

## Cited Applications:

WB

## Species Specificity:

human, mouse, rat

## Cited Species:

rat, mouse

**Note-IHC: suggested antigen retrieval with TE buffer pH 9.0; (\*) Alternatively, antigen retrieval may be performed with citrate buffer pH 6.0**

## Positive Controls:

WB: Raji cells, A549 cells

IHC: human colon cancer tissue, human breast cancer tissue, human colon tissue

## Background Information

The proteasome is a multicatalytic proteinase complex with a highly ordered ring-shaped 20S core structure. PSMB7 protein is a member of the proteasome B-type family, also known as the T1B family, and is a 20S core beta subunit in the proteasome. Expression of this catalytic subunit is downregulated by gamma interferon, and proteolytic processing is required to generate a mature subunit. Component of the 20S core proteasome complex are involved in the proteolytic degradation of most intracellular proteins. PSMB7 displays a trypsin-like activity. (PMID:15244466, PMID:27176742, PMID: 8610016)

## Notable Publications

Author	Pubmed ID	Journal	Application
Xin Xie	35710020	Biochem Pharmacol	WB
Samir R Nath	29809168	J Clin Invest	WB
Wenjuan Zhang	33919255	Int J Mol Sci	WB

## Storage

## Storage:

Store at -20°C. Stable for one year after shipment.

## Storage Buffer:

PBS with 0.02% sodium azide and 50% glycerol pH 7.3.

Aliquoting is unnecessary for -20°C storage

\*\*\* 20ul sizes contain 0.1% BSA

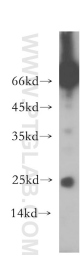
For technical support and original validation data for this product please contact:

T: 1 (888) 4PTGLAB (1-888-478-4522) (toll free in USA), or 1(312) 455-8498 (outside USA)

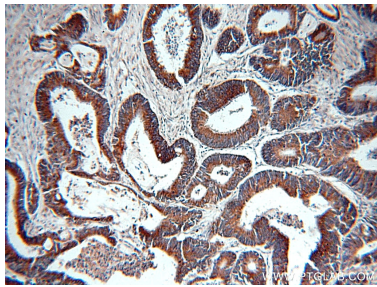
E: [proteintech@ptglab.com](mailto:proteintech@ptglab.com)  
W: [ptglab.com](http://ptglab.com)

This product is exclusively available under Proteintech Group brand and is not available to purchase from any other manufacturer.

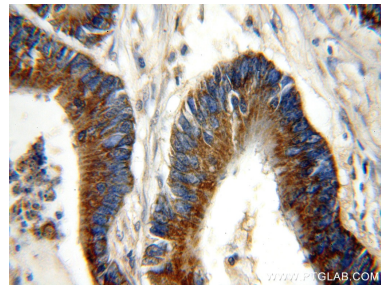
Selected Validation Data



Raji cells were subjected to SDS PAGE followed by western blot with 14727-1-AP (PSMB7 antibody) at dilution of 1:200 incubated at room temperature for 1.5 hours.



Immunohistochemical analysis of paraffin-embedded human colon cancer using 14727-1-AP (PSMB7 antibody) at dilution of 1:50 (under 10x lens).



Immunohistochemical analysis of paraffin-embedded human colon cancer using 14727-1-AP (PSMB7 antibody) at dilution of 1:50 (under 40x lens).