

For Research Use Only

# UCH-L1/PGP9.5 Polyclonal antibody

Catalog Number: 14730-1-AP

Featured Product

127 Publications



## Basic Information

### Catalog Number:

14730-1-AP

### Size:

150ul, Concentration: 650 ug/ml by Nanodrop;

### Source:

Rabbit

### Isotype:

IgG

### Immunogen Catalog Number:

AG6490

### GenBank Accession Number:

BC000332

### GeneID (NCBI):

7345

### UNIPROT ID:

P09936

### Full Name:

ubiquitin carboxyl-terminal esterase L1 (ubiquitin thiolesterase)

### Calculated MW:

25 kDa

### Observed MW:

27 kDa

### Purification Method:

Antigen affinity purification

### Recommended Dilutions:

WB 1:5000-1:50000

IHC 1:50-1:500

IF-P 1:50-1:500

IF/ICC 1:200-1:800

## Applications

### Tested Applications:

WB, IHC, IF/ICC, IF-P, FC (Intra), ELISA

### Cited Applications:

WB, IHC, IF, CoIP, ELISA

### Species Specificity:

human, mouse, rat

### Cited Species:

human, mouse, rat, pig, canine, monkey, non-human primate

**Note-IHC: suggested antigen retrieval with TE buffer pH 9.0; (\*) Alternatively, antigen retrieval may be performed with citrate buffer pH 6.0**

### Positive Controls:

**WB**: A549 cells, NCI-H1299 cells, SH-SY5Y cells, Neuro-2a cells, C6 cells, mouse brain tissue, rat brain tissue

**IHC**: mouse brain tissue, human intrahepatic cholangiocarcinoma tissue

**IF-P**: mouse brain tissue,

**IF/ICC**: A549 cells, mouse brain tissue

## Background Information

UCHL1 (Ubiquitin carboxyl-terminal hydrolase isozyme L1) is a member of a gene family whose products hydrolyze small C-terminal adducts of ubiquitin to generate the ubiquitin monomer. Expression of UCHL1 is highly specific to neurons and to cells of the diffuse neuroendocrine system and their tumors. It is present in all neurons (PMID: 6343558). This protein is present in brain at concentrations at least 50 times greater than in other organs and is a major protein component of neuronal cytoplasm (PMID: 7217993). And UCHL1 is a Parkinson's disease susceptibility gene (PMID: 15048890).

## Notable Publications

Author	Pubmed ID	Journal	Application
Wisam Toma	36096180	Exp Neurol	IHC
Matthew Bratkowski	36087583	Neuron	IF
Haochen Jiang	28918935	Cell Metab	WB, IF

## Storage

### Storage:

Store at -20°C. Stable for one year after shipment.

### Storage Buffer:

PBS with 0.02% sodium azide and 50% glycerol, pH7.3

Aliquoting is unnecessary for -20°C storage

\*\*\* 20ul sizes contain 0.1% BSA

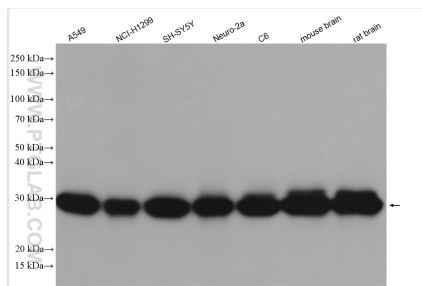
For technical support and original validation data for this product please contact:

T: 1 (888) 4PTGLAB (1-888-478-4522) (toll free in USA), or 1(312) 455-8498 (outside USA)

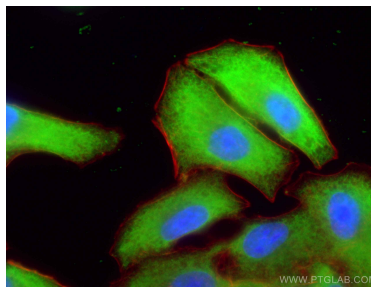
E: [proteintech@ptglab.com](mailto:proteintech@ptglab.com)  
W: [ptglab.com](http://ptglab.com)

This product is exclusively available under Proteintech Group brand and is not available to purchase from any other manufacturer.

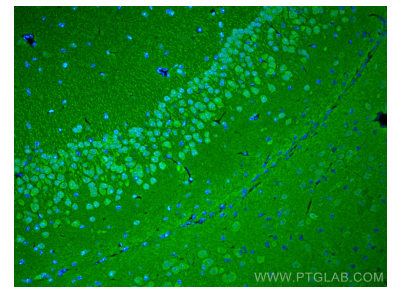
## Selected Validation Data



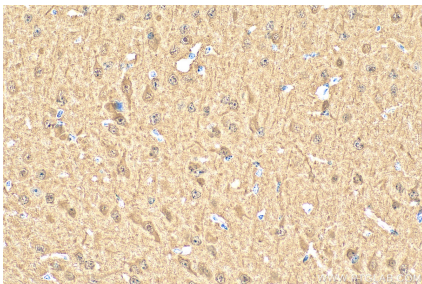
Various lysates were subjected to SDS PAGE followed by western blot with 14730-1-AP (UCHL1/PGP9.5 antibody) at dilution of 1:20000 incubated at room temperature for 1.5 hours.



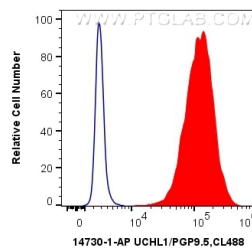
Immunofluorescent analysis of (-20°C Ethanol) fixed A549 cells using UCHL1/PGP9.5 antibody (14730-1-AP) at dilution of 1:400 and CoraLite®488-Conjugated AffiniPure Goat Anti-Rabbit IgG(H+L).



Immunofluorescent analysis of (4% PFA) fixed mouse brain tissue using UCHL1/PGP9.5 antibody (14730-1-AP) at dilution of 1:200 and CoraLite®488-Conjugated AffiniPure Goat Anti-Rabbit IgG(H+L).



Immunohistochemical analysis of paraffin-embedded mouse brain tissue slide using 14730-1-AP (UCHL1/PGP9.5 antibody) at dilution of 1:200 (under 40x lens). Heat mediated antigen retrieval with Tris-EDTA buffer (pH 9.0).



1X10<sup>6</sup> C6 cells were intracellularly stained with 0.4 ug Anti-Human UCHL1/PGP9.5 (14730-1-AP) and CoraLite®488-Conjugated AffiniPure Goat Anti-Rabbit IgG(H+L) at dilution 1:1000 (red), or 0.4 ug Control Antibody. Cells were fixed with 4% PFA and permeabilized with Flow Cytometry Perm Buffer (PF00011-C).