

For Research Use Only

hD53; TPD52L1 Polyclonal antibody

Catalog Number: 14732-1-AP

Featured Product

6 Publications



Basic Information

Catalog Number:

14732-1-AP

Size:

150ul, Concentration: 600 ug/ml by Nanodrop and 207 ug/ml by Bradford method using BSA as the standard;

Source:

Rabbit

Isotype:

IgG

Immunogen Catalog Number:

AG6493

GenBank Accession Number:

BC002375

GeneID (NCBI):

7164

UNIPROT ID:

Q16890

Full Name:

tumor protein D52-like 1

Calculated MW:

22 kDa

Observed MW:

25 kDa

Purification Method:

Antigen affinity purification

Recommended Dilutions:

WB 1:500-1:1000

IP 0.5-4.0 ug for 1.0-3.0 mg of total protein lysate

IHC 1:50-1:500

IF/ICC 1:20-1:200

Applications

Tested Applications:

WB, IHC, IF/ICC, IP, ELISA

Cited Applications:

WB, IHC, IP

Species Specificity:

human

Cited Species:

human, mouse

Note-IHC: suggested antigen retrieval with TE buffer pH 9.0; (*) Alternatively, antigen retrieval may be performed with citrate buffer pH 6.0

Positive Controls:

WB : MCF7 cells, MCF-7 cells

IP : MCF-7 cells,

IHC : human prostate cancer tissue,

IF/ICC : MCF-7 cells,

Background Information

Tumor protein D52-like 1 (TPD52L1) gene, also known as hD53, encodes a member of the tumor protein D52 (TPD52) family. TPD52-like proteins are coiled-coil motif-bearing proteins first identified through their expression in human breast carcinoma, which have been proposed to represent signaling intermediates and regulators of vesicle trafficking. hD53 may form homo- or heterodimers with other TPD52 family members, and it is reported to be involved in cell proliferation and calcium signaling. Four variants resulted from alternative splicing have been predicated and this antibody is expected to recognize all the variants.

Notable Publications

Author	Pubmed ID	Journal	Application
Scott A Ochsner	31672983	Sci Data	
Kosuke Kato	28339026	Int J Oncol	WB,IHC,IP
Hiromi Motohashi	28298474	Biochem J	WB

Storage

Storage:

Store at -20°C. Stable for one year after shipment.

Storage Buffer:

PBS with 0.02% sodium azide and 50% glycerol pH 7.3.

Aliquoting is unnecessary for -20°C storage

*** 20ul sizes contain 0.1% BSA

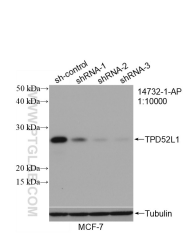
For technical support and original validation data for this product please contact:

T: 1 (888) 4PTGLAB (1-888-478-4522) (toll free in USA), or 1(312) 455-8498 (outside USA)

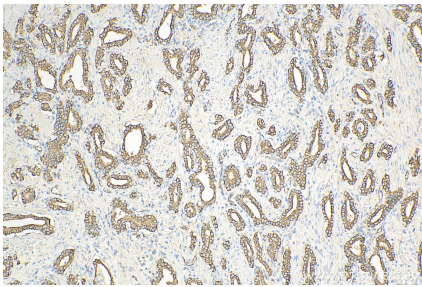
E: proteintech@ptglab.com
W: ptglab.com

This product is exclusively available under Proteintech Group brand and is not available to purchase from any other manufacturer.

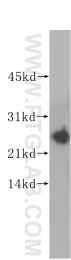
Selected Validation Data



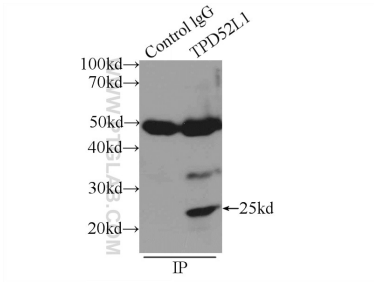
WB result of hD53; TPD52L1 antibody (14732-1-AP; 1:10000; incubated at room temperature for 1.5 hours) with sh-Control and sh-hD53; TPD52L1 transfected MCF-7 cells.



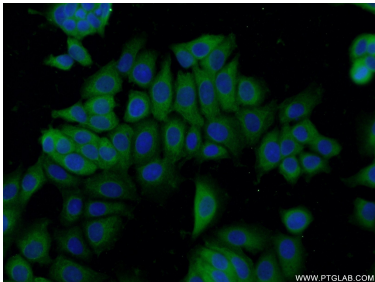
Immunohistochemical analysis of paraffin-embedded human prostate cancer tissue slide using 14732-1-AP (hD53; TPD52L1 antibody) at dilution of 1:200 (under 10x lens). Heat mediated antigen retrieval with Tris-EDTA buffer (pH 9.0).



MCF7 cells were subjected to SDS PAGE followed by western blot with 14732-1-AP (hD53; TPD52L1 antibody) at dilution of 1:500 incubated at room temperature for 1.5 hours.



IP result of anti-hD53; TPD52L1 (IP:14732-1-AP, 3ug; Detection:14732-1-AP 1:300) with MCF-7 cells lysate 2500ug.



Immunofluorescent analysis of MCF-7 cells using 14732-1-AP (hD53; TPD52L1 antibody) at dilution of 1:50 and Alexa Fluor 488-conjugated Goat Anti-Rabbit IgG(H+L).