

For Research Use Only

DRG2 Polyclonal antibody

Catalog Number: 14743-1-AP

Featured Product

10 Publications



Basic Information

Catalog Number:

14743-1-AP

Size:

150ul, Concentration: 500 µg/ml by Nanodrop and 240 µg/ml by Bradford method using BSA as the standard;

Source:

Rabbit

Isotype:

IgG

Immunogen Catalog Number:

AG6433

GenBank Accession Number:

BC000493

GeneID (NCBI):

1819

UNIPROT ID:

P55039

Full Name:

developmentally regulated GTP binding protein 2

Calculated MW:

41 kDa

Observed MW:

41-45 kDa

Purification Method:

Antigen affinity purification

Recommended Dilutions:

WB 1:3000-1:8000

IP 0.5-4.0 µg for 1.0-3.0 mg of total protein lysate

IHC 1:50-1:500

IF 1:50-1:500

Applications

Tested Applications:

IF, IHC, IP, WB, ELISA

Cited Applications:

IF, IP, WB

Species Specificity:

human, mouse, rat

Cited Species:

human, rat, mouse, monkey

Note-IHC: suggested antigen retrieval with TE buffer pH 9.0; (*) Alternatively, antigen retrieval may be performed with citrate buffer pH 6.0

Positive Controls:

WB: HepG2 cells, mouse brain tissue, SMMC-7721 cells

IP: mouse brain tissue,

IHC: human kidney tissue,

IF: HepG2 cells,

Background Information

Developmentally regulated GTP-binding protein (DRG) is a new subfamily within the superfamily of GTP-binding proteins. Its expression is regulated during embryonic development. DRG2 plays a critical role in control of the cell cycle and apoptosis (PMID:27669826, PMID:14759600). DRG2 Regulates G2/M Progression via the Cyclin B1-Cdk1 Complex.

Notable Publications

Author	Pubmed ID	Journal	Application
Zhijie Shen	33294289	Mol Ther Nucleic Acids	WB
Thao Dang	30453731	Mol Cells	WB,IF
Bing Si Li	34777693	Oxid Med Cell Longev	WB,IF,IP

Storage

Storage:

Store at -20°C. Stable for one year after shipment.

Storage Buffer:

PBS with 0.02% sodium azide and 50% glycerol pH 7.3.

Aliquoting is unnecessary for -20°C storage

*** 20ul sizes contain 0.1% BSA

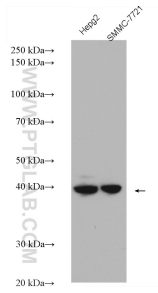
For technical support and original validation data for this product please contact:

T: 1 (888) 4PTGLAB (1-888-478-4522) (toll free in USA), or 1(312) 455-8498 (outside USA)

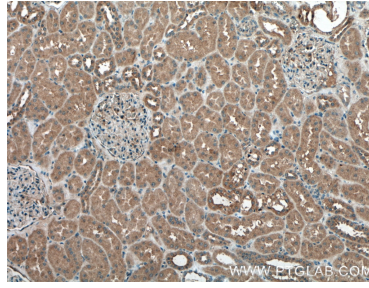
E: proteintech@ptglab.com
W: ptglab.com

This product is exclusively available under Proteintech Group brand and is not available to purchase from any other manufacturer.

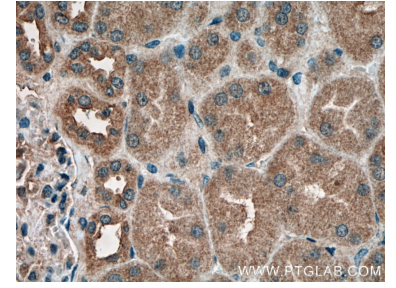
Selected Validation Data



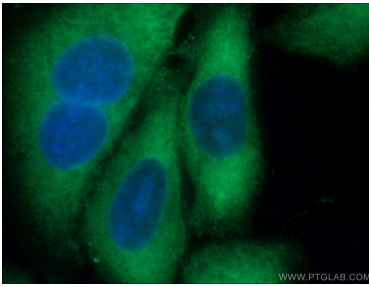
Various lysates were subjected to SDS PAGE followed by western blot with 14743-1-AP (DRG2 antibody) at dilution of 1:8000 incubated at room temperature for 1.5 hours.



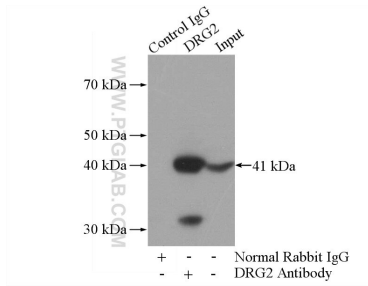
Immunohistochemical analysis of paraffin-embedded human kidney tissue slide using 14743-1-AP (DRG2 antibody) at dilution of 1:200 (under 10x lens).



Immunohistochemical analysis of paraffin-embedded human kidney tissue slide using 14743-1-AP (DRG2 antibody) at dilution of 1:200 (under 40x lens).



Immunofluorescent analysis of (-20°C Ethanol) fixed HepG2 cells using 14743-1-AP (DRG2 antibody) at dilution of 1:50 and Alexa Fluor 488-conjugated AffiniPure Goat Anti-Rabbit IgG(H+L).



IP result of anti-DRG2 (IP:14743-1-AP, 4ug; Detection:14743-1-AP 1:2000) with mouse brain tissue lysate 2640ug.