

For Research Use Only

# ACVRL1 Polyclonal antibody, PBS Only

Catalog Number: 14745-1-PBS



## Basic Information

<b>Catalog Number:</b> 14745-1-PBS	<b>GenBank Accession Number:</b> BC042637	<b>Purification Method:</b> Antigen affinity purification
<b>Size:</b> 100ug, Concentration: 1 mg/ml by Nanodrop;	<b>GeneID (NCBI):</b> 94	
<b>Source:</b> Rabbit	<b>UNIPROT ID:</b> P37023	
<b>Isotype:</b> IgG	<b>Full Name:</b> activin A receptor type II-like 1	
<b>Immunogen Catalog Number:</b> AG6449	<b>Calculated MW:</b> 56 kDa	
	<b>Observed MW:</b> 63 kDa	

## Applications

**Tested Applications:**  
WB, IHC, FC (Intra), IP, Indirect ELISA

**Species Specificity:**  
human

## Background Information

ACVRL1 (also known as ALK1) is a type I cell-surface receptor for the TGF-beta superfamily of ligands. It shares with other type I receptors a high degree of similarity in serine-threonine kinase subdomains, a glycine- and serine-rich region (called the GS domain) preceding the kinase domain, and a short C-terminal tail. ACVRL1 is highly expressed in endothelial cells and has a critical role in the control of blood vessel development and repair (PMID: 8640225). Mutations in the ACVRL1 gene are associated with hemorrhagic telangiectasia type 2.

## Storage

**Storage:**  
Store at -80°C.  
**Storage Buffer:**  
PBS Only

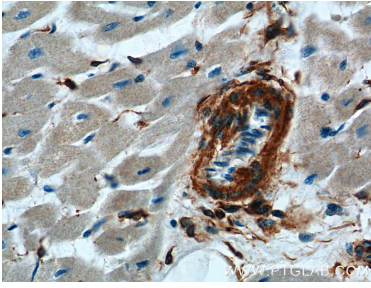
For technical support and original validation data for this product please contact:

T: 1 (888) 4PTGLAB (1-888-478-4522) (toll free in USA), or 1(312) 455-8498 (outside USA)

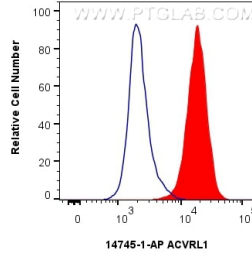
E: [proteintech@ptglab.com](mailto:proteintech@ptglab.com)  
W: [ptglab.com](http://ptglab.com)

**This product is exclusively available under Proteintech Group brand and is not available to purchase from any other manufacturer.**

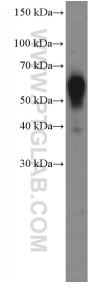
## Selected Validation Data



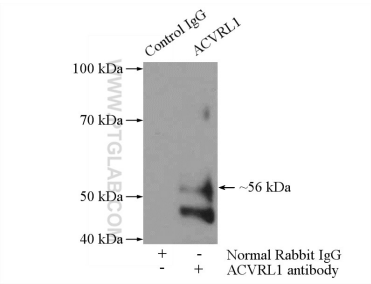
Immunohistochemical analysis of paraffin-embedded human heart tissue slide using 14745-1-AP (ACVRL1 Antibody) at dilution of 1:200 (under 40x lens). This data was developed using the same antibody clone with 14745-1-PBS in a different storage buffer formulation.



$1 \times 10^6$  Jurkat cells were intracellularly stained with 0.25  $\mu$ g ACVRL1 Polyclonal antibody (14745-1-AP) and CoraLite®488-Conjugated Goat Anti-Rabbit IgG(H+L) (SA00013-2)(red), or 0.25  $\mu$ g Rabbit IgG control Rabbit PolyAb (30000-0-AP) (blue). Cells were fixed with 4% PFA and permeabilized with Flow Cytometry Perm Buffer (PF00011-C). This data was developed using the same antibody clone with 14745-1-PBS in a different storage buffer formulation.



human placenta tissue were subjected to SDS PAGE followed by western blot with 14745-1-AP (ACVRL1 Antibody) at dilution of 1:600 incubated at room temperature for 1.5 hours. This data was developed using the same antibody clone with 14745-1-PBS in a different storage buffer formulation.



IP result of anti-ACVRL1 (IP:14745-1-AP, 4 $\mu$ g; Detection:14745-1-AP 1:300) with Jurkat cells lysate 2400 $\mu$ g. This data was developed using the same antibody clone with 14745-1-PBS in a different storage buffer formulation.