

For Research Use Only

# CLP1 Polyclonal antibody

Catalog Number: 14746-1-AP

1 Publications



## Basic Information

<b>Catalog Number:</b> 14746-1-AP	<b>GenBank Accession Number:</b> BC000446	<b>Purification Method:</b> Antigen affinity purification
<b>Size:</b> 150ul , Concentration: 700 µg/ml by Nanodrop and 427 µg/ml by Bradford method using BSA as the standard;	<b>GeneID (NCBI):</b> 10978	<b>Recommended Dilutions:</b> WB 1:500-1:1000
<b>Source:</b> Rabbit	<b>Full Name:</b> CLP1, cleavage and polyadenylation factor I subunit, homolog (S. cerevisiae)	
<b>Isotype:</b> IgG	<b>Calculated MW:</b> 48 kDa	
<b>Immunogen Catalog Number:</b> AG6479	<b>Observed MW:</b> 41 kDa, 48 kDa	

## Applications

<b>Tested Applications:</b> WB, ELISA	<b>Positive Controls:</b> WB : mouse testis tissue, HeLa cells
<b>Species Specificity:</b> human, mouse	

## Background Information

CLP1, also named as HEAB, is a 425 amino acid protein, which belongs to the Clp1 family. CLP1 as a polynucleotide kinase, that can phosphorylate the 5'-hydroxyl groups of double-stranded RNA (dsRNA), single-stranded RNA (ssRNA), double-stranded DNA (dsDNA) and double-stranded DNA:RNA hybrids. Human CLP1 is a component of the mRNA 3' end cleavage and polyadenylation machinery<sup>4,5</sup> and studies in yeast have postulated a function for CLP1 in coupling mRNA 3' end processing with RNA Pol II transcriptional termination. CLP1 exists 2 isoforms with MV 41 kDa and 48 kDa.

## Notable Publications

Author	Pubmed ID	Journal	Application
Xiaodong Lu	27353326	Nucleic Acids Res	

## Storage

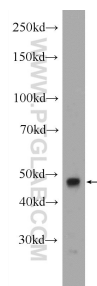
**Storage:**  
Store at -20°C. Stable for one year after shipment.  
**Storage Buffer:**  
PBS with 0.02% sodium azide and 50% glycerol pH 7.3.  
**Aliquoting is unnecessary for -20°C storage**

\*\*\* 20ul sizes contain 0.1% BSA

For technical support and original validation data for this product please contact:  
T: 1 (888) 4PTGLAB (1-888-478-4522) (toll free in USA), or 1(312) 455-8498 (outside USA)  
E: [proteintech@ptglab.com](mailto:proteintech@ptglab.com)  
W: [ptglab.com](http://ptglab.com)

This product is exclusively available under Proteintech Group brand and is not available to purchase from any other manufacturer.

## Selected Validation Data



mouse testis tissue were subjected to SDS PAGE followed by western blot with 14746-1-AP (CLP1 Antibody) at dilution of 1:600 incubated at room temperature for 1.5 hours.