

For Research Use Only

SDF2 Polyclonal antibody

Catalog Number: 14747-1-AP



Basic Information

Catalog Number: 14747-1-AP	GenBank Accession Number: BC000500	Purification Method: Antigen affinity purification
Size: 150ul , Concentration: 500 ug/ml by Nanodrop;	GeneID (NCBI): 6388	Recommended Dilutions: WB 1:1000-1:4000 IHC 1:50-1:500
Source: Rabbit	UNIPROT ID: Q99470	
Isotype: IgG	Full Name: stromal cell-derived factor 2	
Immunogen Catalog Number: AG6480	Calculated MW: 23 kDa	
	Observed MW: 23 kDa	

Applications

Tested Applications: WB, IHC, ELISA	Positive Controls:
Species Specificity: human, mouse	WB : Jurkat cells, HUVEC cells, mouse heart, U2OS cells
Note-IHC: suggested antigen retrieval with TE buffer pH 9.0; (*) Alternatively, antigen retrieval may be performed with citrate buffer pH 6.0	IHC : human ovary cancer tissue,

Background Information

SDF-2 is a small protein of 211 amino acids that is ubiquitously expressed in lung, breast, colon, liver and kidney. SDF-2 is localized in the ER and has been reported to get involved in multiple endoplasmic reticulum (ER) functions, including the misfolded protein catabolic process, protein glycosylation, and ER protein quality control.

Storage

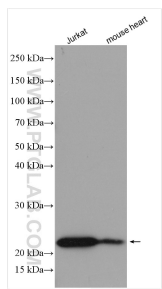
Storage:
Store at -20°C. Stable for one year after shipment.
Storage Buffer:
PBS with 0.02% sodium azide and 50% glycerol pH 7.3.
Aliquoting is unnecessary for -20°C storage

*** 20ul sizes contain 0.1% BSA

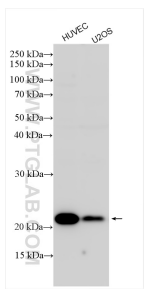
For technical support and original validation data for this product please contact:
T: 1 (888) 4PTGLAB (1-888-478-4522) (toll free in USA), or 1(312) 455-8498 (outside USA)
E: proteintech@ptglab.com
W: ptglab.com

This product is exclusively available under Proteintech Group brand and is not available to purchase from any other manufacturer.

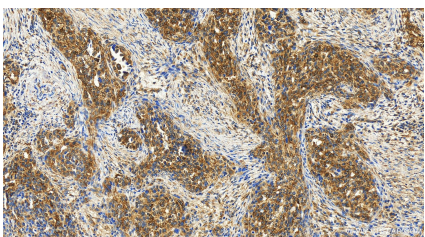
Selected Validation Data



Various lysates were subjected to SDS PAGE followed by western blot with 14747-1-AP (SDF2 antibody) at dilution of 1:2000 incubated at room temperature for 1.5 hours.



Various lysates were subjected to SDS PAGE followed by western blot with 14747-1-AP (SDF2 antibody) at dilution of 1:2000 incubated at room temperature for 1.5 hours.



Immunohistochemical analysis of paraffin-embedded human ovary cancer tissue slide using 14747-1-AP (SDF2 antibody) at dilution of 1:200 (under 20x lens). Heat mediated antigen retrieval with Tris-EDTA buffer (pH 9.0).