

For Research Use Only

SDF2 Polyclonal antibody, PBS Only

Catalog Number:14747-1-PBS



Basic Information

Catalog Number: 14747-1-PBS	GenBank Accession Number: BC000500	Purification Method: Antigen affinity purification
Size: 100ug , Concentration: 1 mg/ml by Nanodrop;	GeneID (NCBI): 6388	
Source: Rabbit	UNIPROT ID: Q99470	
Isotype: IgG	Full Name: stromal cell-derived factor 2	
Immunogen Catalog Number: AG6480	Calculated MW: 23 kDa	
	Observed MW: 23 kDa	

Applications

Tested Applications:
WB, IHC, Indirect ELISA

Species Specificity:
human, mouse

Background Information

SDF-2 is a small protein of 211 amino acids that is ubiquitously expressed in lung, breast, colon, liver and kidney. SDF-2 is localized in the ER and has been reported to get involved in multiple endoplasmic reticulum (ER) functions, including the misfolded protein catabolic process, protein glycosylation, and ER protein quality control.

Storage

Storage:
Store at -80°C.

Storage Buffer:
PBS Only

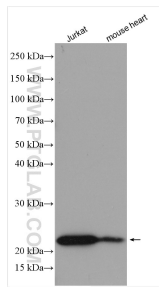
For technical support and original validation data for this product please contact:

T: 1 (888) 4PTGLAB (1-888-478-4522) (toll free
in USA), or 1(312) 455-8498 (outside USA)

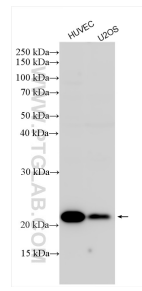
E: proteintech@ptglab.com
W: ptglab.com

This product is exclusively available under Proteintech Group brand and is not available to purchase from any other manufacturer.

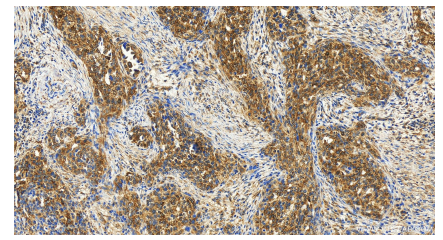
Selected Validation Data



Various lysates were subjected to SDS PAGE followed by western blot with 14747-1-AP (SDF2 antibody) at dilution of 1:2000 incubated at room temperature for 1.5 hours. This data was developed using the same antibody clone with 14747-1-PBS in a different storage buffer formulation.



Various lysates were subjected to SDS PAGE followed by western blot with 14747-1-AP (SDF2 antibody) at dilution of 1:2000 incubated at room temperature for 1.5 hours. This data was developed using the same antibody clone with 14747-1-PBS in a different storage buffer formulation.



Immunohistochemical analysis of paraffin-embedded human ovary cancer tissue slide using 14747-1-AP (SDF2 antibody) at dilution of 1:200 (under 20x lens). Heat mediated antigen retrieval with Tris-EDTA buffer (pH 9.0). This data was developed using the same antibody clone with 14747-1-PBS in a different storage buffer formulation.