

For Research Use Only

CORO1C Polyclonal antibody

Catalog Number: 14749-1-AP

Featured Product

13 Publications



Basic Information

Catalog Number:

14749-1-AP

Size:

150ul, Concentration: 260 ug/ml by Nanodrop and 220 ug/ml by Bradford method using BSA as the standard;

Source:

Rabbit

Isotype:

IgG

Immunogen Catalog Number:

AG6488

GenBank Accession Number:

BC002342

GeneID (NCBI):

23603

UNIPROT ID:

Q9ULV4

Full Name:

coronin, actin binding protein, 1C

Calculated MW:

53 kDa

Observed MW:

57 kDa

Purification Method:

Antigen affinity purification

Recommended Dilutions:

WB 1:500-1:3000

IP 0.5-4.0 ug for 1.0-3.0 mg of total protein lysate

IHC 1:100-1:500

IF/ICC 1:200-1:800

Applications

Tested Applications:

WB, IHC, IF/ICC, IP, ELISA

Cited Applications:

WB, IHC, IF

Species Specificity:

human, mouse, rat

Cited Species:

human, mouse, monkey

Note-IHC: suggested antigen retrieval with TE buffer pH 9.0; (*) Alternatively, antigen retrieval may be performed with citrate buffer pH 6.0

Positive Controls:

WB: mouse heart tissue, human heart tissue, SGC-7901 cells, HeLa cells, mouse skeletal muscle tissue

IP: mouse heart tissue, mouse skeletal muscle tissue

IHC: human cervical cancer tissue, human normal colon

IF/ICC: SH-SY5Y cells,

Background Information

CORO1C also known as HCRNN4, belongs to the WD repeat coronin family. CORO1C contains 5 N-terminal trp-asp (WD) repeats and a C-terminal coiled-coil motif. It was reported to regulate actin-dependent processes by assembling F-actin. CORO1C promoted the invasion of breast cancer and glioma cells by specifically promoting the formation of invadopodia (PMID: 30974047).

Notable Publications

Author	Pubmed ID	Journal	Application
Melissa J Hoyer	30220460	Cell	WB
Xin Jun Wang	31595425	Mol Cell Biochem	WB
Wang Zhi-Gang ZG	23292607	Oncol Rep	WB

Storage

Storage:

Store at -20°C. Stable for one year after shipment.

Storage Buffer:

PBS with 0.02% sodium azide and 50% glycerol pH 7.3.

Aliquoting is unnecessary for -20°C storage

*** 20ul sizes contain 0.1% BSA

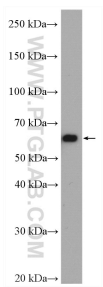
For technical support and original validation data for this product please contact:

T: 1 (888) 4PTGLAB (1-888-478-4522) (toll free in USA), or 1(312) 455-8498 (outside USA)

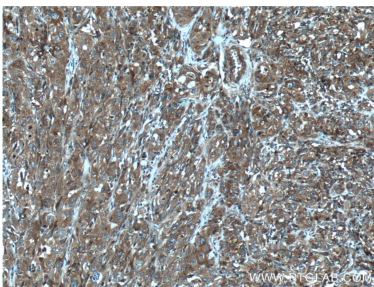
E: proteintech@ptglab.com
W: ptglab.com

This product is exclusively available under Proteintech Group brand and is not available to purchase from any other manufacturer.

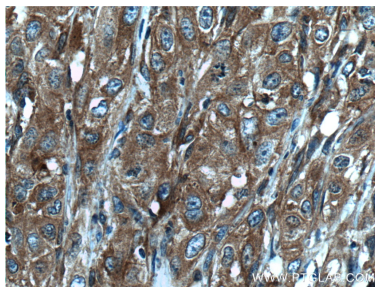
Selected Validation Data



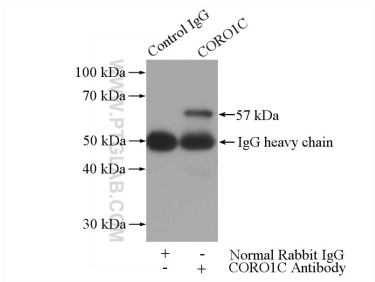
mouse heart tissue were subjected to SDS PAGE followed by western blot with 14749-1-AP (CORO1C antibody) at dilution of 1:1000 incubated at room temperature for 1.5 hours.



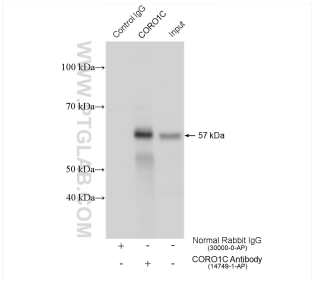
Immunohistochemical analysis of paraffin-embedded human cervical cancer tissue slide using 14749-1-AP (CORO1C antibody) at dilution of 1:100 (under 10x lens. Heat mediated antigen retrieval with Tris-EDTA buffer (pH 9.0).



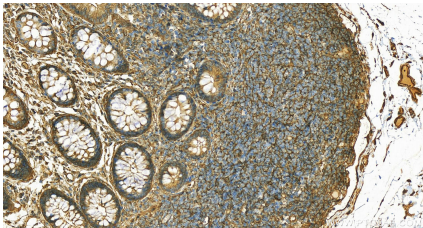
Immunohistochemical analysis of paraffin-embedded human cervical cancer tissue slide using 14749-1-AP (CORO1C antibody) at dilution of 1:100 (under 40x lens. Heat mediated antigen retrieval with Tris-EDTA buffer (pH 9.0).



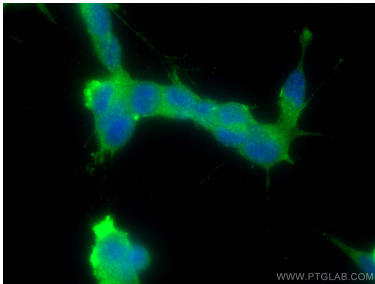
IP result of anti-CORO1C (IP:14749-1-AP, 4ug; Detection:14749-1-AP 1:500) with mouse skeletal muscle tissue lysate 3600ug.



IP result of anti-CORO1C (IP:14749-1-AP, 4ug; Detection:14749-1-AP 1:3000) with mouse heart tissue lysate 1680 ug.



Immunohistochemical analysis of paraffin-embedded human normal colon slide using 14749-1-AP (CORO1C antibody) at dilution of 1:200 (under 20x lens). Heat mediated antigen retrieval with Tris-EDTA buffer (pH 9.0).



Immunofluorescent analysis of (-20°C Ethanol) fixed SH-SY5Y cells using CORO1C antibody (14749-1-AP) at dilution of 1:400 and CoraLite®488-Conjugated Goat Anti-Rabbit IgG(H+L).