

For Research Use Only

OSBPL2 Polyclonal antibody

Catalog Number: 14751-1-AP

Featured Product

10 Publications



Basic Information

Catalog Number:
14751-1-AP

Size:
150ul, Concentration: 300 µg/ml by Nanodrop and 167 µg/ml by Bradford method using BSA as the standard;

Source:
Rabbit

Isotype:
IgG

Immunogen Catalog Number:
AG6496

GenBank Accession Number:
BC000296

GeneID (NCBI):
9885

Full Name:
oxysterol binding protein-like 2

Calculated MW:
55 kDa

Observed MW:
51 kDa, 56 kDa

Purification Method:
Antigen affinity purification

Recommended Dilutions:
WB 1:500-1:2000
IP 0.5-4.0 ug for IP and 1:500-1:1000 for WB
IHC 1:20-1:200

Applications

Tested Applications:
IHC, IP, WB, ELISA

Cited Applications:
ChIP, IF, WB

Species Specificity:
human

Cited Species:
human, mouse

Note-IHC: suggested antigen retrieval with TE buffer pH 9.0; (*) Alternatively, antigen retrieval may be performed with citrate buffer pH 6.0

Positive Controls:

WB: A549 cells, HeLa cells, HuH-7 cells, mouse brain tissue

IP: HeLa cells,

IHC: human ovary tumor tissue,

Background Information

Notable Publications

Author	Pubmed ID	Journal	Application
Flora Cozzolino	32886703	PLoS One	WB
Tamara Escajadillo	26992564	Mol Cell Endocrinol	IF, ChIP
Young Ik Koh	35253614	Autophagy	WB, IF

Storage

Storage:

Store at -20°C. Stable for one year after shipment.

Storage Buffer:

PBS with 0.02% sodium azide and 50% glycerol pH 7.3.

Aliquoting is unnecessary for -20°C storage

*** 20ul sizes contain 0.1% BSA

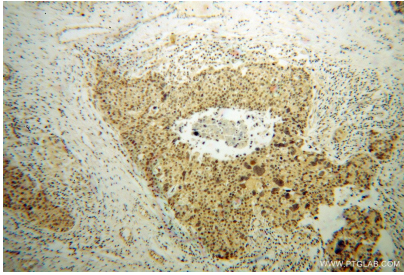
For technical support and original validation data for this product please contact:

T: 1 (888) 4PTGLAB (1-888-478-4522) (toll free in USA), or 1(312) 455-8498 (outside USA)

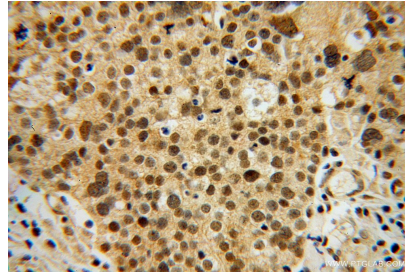
E: proteintech@ptglab.com
W: ptglab.com

This product is exclusively available under Proteintech Group brand and is not available to purchase from any other manufacturer.

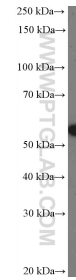
Selected Validation Data



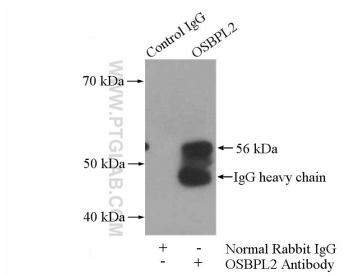
Immunohistochemical analysis of paraffin-embedded human ovary tumor using 14751-1-AP (OSBPL2 antibody) at dilution of 1:100 (under 10x lens).



Immunohistochemical analysis of paraffin-embedded human ovary tumor using 14751-1-AP (OSBPL2 antibody) at dilution of 1:100 (under 40x lens).



A549 cells were subjected to SDS PAGE followed by western blot with 14751-1-AP (OSBPL2 Antibody) at dilution of 1:1000 incubated at room temperature for 1.5 hours.



IP Result of anti-OSBPL2 (IP:14751-1-AP, 4ug; Detection:14751-1-AP 1:500) with HeLa cells lysate 880ug.