

For Research Use Only

AARE Polyclonal antibody

Catalog Number: 14758-1-AP

1 Publications



Basic Information

Catalog Number:	GenBank Accession Number:	Purification Method:
14758-1-AP	BC000362	Antigen affinity purification
Size:	GeneID (NCBI):	Recommended Dilutions:
150ul , Concentration: 450 µg/ml by Nanodrop;	327	WB 1:1000-1:4000 IHC 1:20-1:200
Source:	Full Name:	
Rabbit	N-acylaminoacyl-peptide hydrolase	
Isotype:	Calculated MW:	
IgG	81 kDa	
Immunogen Catalog Number:	Observed MW:	
AG6511	66-80 kDa	

Applications

Tested Applications:	Positive Controls:
IHC, WB, ELISA	WB : COLO 320 cells, HeLa cells, human plasma tissue
Cited Applications:	IHC : human liver tissue,
WB	
Species Specificity:	
human	
Note-IHC: suggested antigen retrieval with TE buffer pH 9.0; (*) Alternatively, antigen retrieval may be performed with citrate buffer pH 6.0	

Background Information

APH, (APEH, acylpeptide hydrolase), which catalyzes the hydrolysis of the terminal acetylated amino acid preferentially from small acetylated peptides. The acylpeptide hydrolase is a homotetrameric protein of 300 kDa with each subunit consisting of 732 amino acid residues. A range of molecular masses have been reported for APH by previous investigators, including 80 kD, 75 kD and 69 kD. This antibody can recognize at least 2 isoforms of APH.

Notable Publications

Author	Pubmed ID	Journal	Application
Rubayet Elahi	31068431	mSphere	WB

Storage

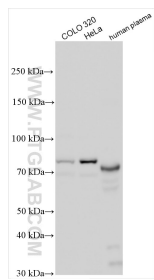
Storage:
Store at -20°C. Stable for one year after shipment.
Storage Buffer:
PBS with 0.02% sodium azide and 50% glycerol pH 7.3.
Aliquoting is unnecessary for -20°C storage

*** 20ul sizes contain 0.1% BSA

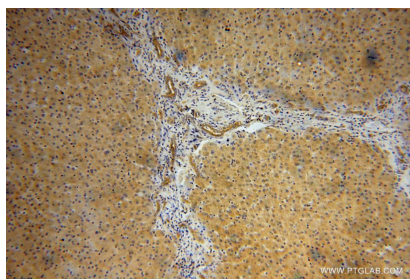
For technical support and original validation data for this product please contact:
T: 1 (888) 4PTGLAB (1-888-478-4522) (toll free in USA), or 1(312) 455-8498 (outside USA)
E: proteintech@ptglab.com
W: ptglab.com

This product is exclusively available under Proteintech Group brand and is not available to purchase from any other manufacturer.

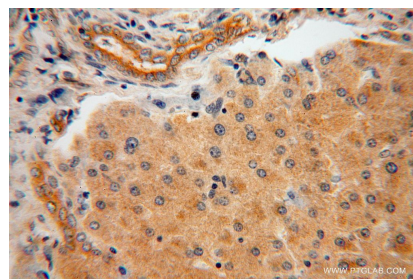
Selected Validation Data



Various lysates were subjected to SDS PAGE followed by western blot with 14758-1-AP (AARE antibody) at dilution of 1:2000 incubated at room temperature for 1.5 hours.



Immunohistochemical analysis of paraffin-embedded human liver using 14758-1-AP (AARE antibody) at dilution of 1:100 (under 10x lens).



Immunohistochemical analysis of paraffin-embedded human liver using 14758-1-AP (AARE antibody) at dilution of 1:100 (under 40x lens).