

For Research Use Only

MRPL16 Polyclonal antibody

Catalog Number: 14762-1-AP



Basic Information

Catalog Number:

14762-1-AP

Size:

150ul, Concentration: 130 ug/ml by Nanodrop;

Source:

Rabbit

Isotype:

IgG

Immunogen Catalog Number:

AG6523

GenBank Accession Number:

BC001040

GeneID (NCBI):

54948

UNIPROT ID:

Q9NX20

Full Name:

mitochondrial ribosomal protein L16

Calculated MW:

28 kDa

Observed MW:

28 kDa

Purification Method:

Antigen affinity purification

Recommended Dilutions:

WB 1:500-1:1000

IP 0.5-4.0 ug for 1.0-3.0 mg of total protein lysate

IHC 1:50-1:500

Applications

Tested Applications:

WB, IHC, IP, ELISA

Species Specificity:

human, mouse, rat

Note-IHC: suggested antigen retrieval with TE buffer pH 9.0; (*) Alternatively, antigen retrieval may be performed with citrate buffer pH 6.0

Positive Controls:

WB : HeLa cells,

IP : HeLa cells,

IHC : human intrahepatic cholangiocarcinoma tissue,

Background Information

MRPL16 (Mitochondrial Ribosomal Protein L16) is a protein coding gene. It encodes a 39S subunit protein. Mitochondrial ribosomes (mitoribosomes) consist of a small 28S subunit and a large 39S subunit. The molecular mass of MRPL16 is 28 kDa.

Storage

Storage:

Store at -20°C. Stable for one year after shipment.

Storage Buffer:

PBS with 0.02% sodium azide and 50% glycerol pH 7.3.

Aliquoting is unnecessary for -20°C storage

*** 20ul sizes contain 0.1% BSA

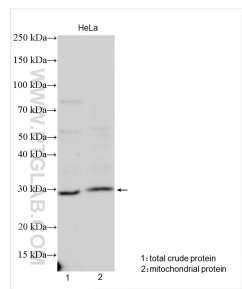
For technical support and original validation data for this product please contact:

T: 1 (888) 4PTGLAB (1-888-478-4522) (toll free in USA), or 1(312) 455-8498 (outside USA)

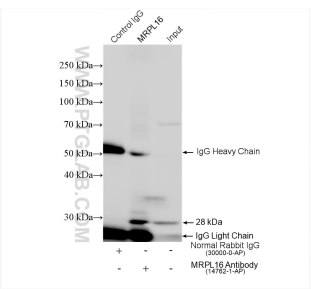
E: proteintech@ptglab.com
W: ptglab.com

This product is exclusively available under Proteintech Group brand and is not available to purchase from any other manufacturer.

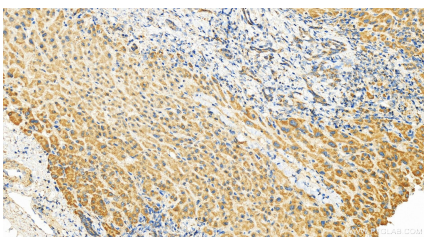
Selected Validation Data



Various lysates were subjected to SDS PAGE followed by western blot with 14762-1-AP (MRPL16 antibody) at dilution of 1:800 incubated at room temperature for 1.5 hours.



IP result of anti-MRPL16 (IP:14762-1-AP, 4ug; Detection:14762-1-AP 1:500) with HeLa cells lysate 1520 ug.



Immunohistochemical analysis of paraffin-embedded human intrahepatic cholangiocarcinoma tissue slide using 14762-1-AP (MRPL16 antibody) at dilution of 1:200 (under 20x lens). Heat mediated antigen retrieval with Tris-EDTA buffer (pH 9.0).