

For Research Use Only

NOD1 Polyclonal antibody

Catalog Number: 14770-1-AP



Basic Information

Catalog Number: 14770-1-AP	GenBank Accession Number: BC040339	Purification Method: Antigen affinity purification
Size: 150ul , Concentration: 350 µg/ml by Nanodrop;	GeneID (NCBI): 10392	Recommended Dilutions: WB 1:1000-1:6000
Source: Rabbit	Full Name: nucleotide-binding oligomerization domain containing 1	
Isotype: IgG	Calculated MW: 108 kDa	
Immunogen Catalog Number: AG6567	Observed MW: 90-100 kDa	

Applications

Tested Applications: WB, ELISA	Positive Controls: WB : 4T1 cells, RAW 264.7 cells
Species Specificity: human, mouse	

Background Information

NOD1 protein contains a caspase recruitment domain (CARD). NOD1 is a member of NOD-like receptor protein family and is a close relative of NOD2. NOD1 is ubiquitously expressed and recognizes bacterial peptidoglycan fragments, including d-glutamyl-meso-diaminopimelic acid found in gram-negative and some gram-positive bacteria. NOD1 plays a role in innate immunity by acting as a pattern-recognition receptor (PRR) that binds bacterial peptidoglycans and initiates inflammation. This protein has also been implicated in the immune response to viral and parasitic infection.

Storage

Storage:
Store at -20°C. Stable for one year after shipment.
Storage Buffer:
PBS with 0.02% sodium azide and 50% glycerol pH 7.3.
Aliquoting is unnecessary for -20°C storage

*** 20ul sizes contain 0.1% BSA

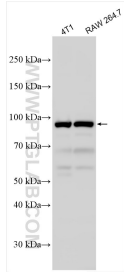
For technical support and original validation data for this product please contact:

T: 1 (888) 4PTGLAB (1-888-478-4522) (toll free in USA), or 1(312) 455-8498 (outside USA)

E: proteintech@ptglab.com
W: ptglab.com

This product is exclusively available under Proteintech Group brand and is not available to purchase from any other manufacturer.

Selected Validation Data



Various lysates were subjected to SDS PAGE followed by western blot with 14770-1-AP (NOD1 antibody) at dilution of 1:3000 incubated at room temperature for 1.5 hours.