

For Research Use Only

ERLIN2 Polyclonal antibody

Catalog Number: 14781-1-AP

2 Publications



Basic Information

Catalog Number: 14781-1-AP	GenBank Accession Number: BC067765	Purification Method: Antigen affinity purification
Size: 150ul , Concentration: 350 ug/ml by Nanodrop and 267 ug/ml by Bradford method using BSA as the standard;	GeneID (NCBI): 11160	Recommended Dilutions: WB 1:500-1:1000 IHC 1:50-1:500
Source: Rabbit	UNIPROT ID: O94905	
Isotype: IgG	Full Name: ER lipid raft associated 2	
Immunogen Catalog Number: AG6369	Calculated MW: 38 kDa	
	Observed MW: 38 kDa	

Applications

Tested Applications: WB, IHC, ELISA	Positive Controls:
Cited Applications: WB	WB : HeLa cells,
Species Specificity: human, mouse, rat	IHC : human liver cancer tissue,
Cited Species: human	

Note-IHC: suggested antigen retrieval with **TE buffer pH 9.0; (*) Alternatively, antigen retrieval may be performed with citrate buffer pH 6.0**

Background Information

ERLIN2, also named as C8orf2 and SPFH2, is a component of the ERLIN1/ERLIN2 complex which mediates the endoplasmic reticulum-associated degradation (ERAD) of inositol 1,4,5-trisphosphate receptors (IP3Rs) such as ITPR1 (PubMed:19240031, PubMed:17502376). It promotes sterol-accelerated ERAD of HMGCR probably implicating an AMFR/gp78-containing ubiquitin ligase complex (PubMed:21343306). ERLIN2 is involved in regulation of cellular cholesterol homeostasis by regulation the SREBP signaling pathway. The MW of ERLIN1/ERLIN2 complex is about 70 kDa.

Notable Publications

Author	Pubmed ID	Journal	Application
Bo-Tao Li	32776921	PLoS Genet	WB
Hazel Stewart	37860693	iScience	WB

Storage

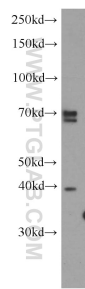
Storage:
Store at -20°C. Stable for one year after shipment.
Storage Buffer:
PBS with 0.02% sodium azide and 50% glycerol pH 7.3.
Aliquoting is unnecessary for -20°C storage

*** 20ul sizes contain 0.1% BSA

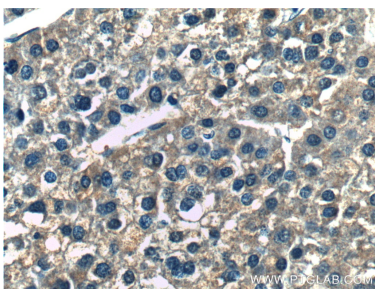
For technical support and original validation data for this product please contact:
T: 1 (888) 4PTGLAB (1-888-478-4522) (toll free in USA), or 1(312) 455-8498 (outside USA)
E: proteintech@ptglab.com
W: ptglab.com

This product is exclusively available under Proteintech Group brand and is not available to purchase from any other manufacturer.

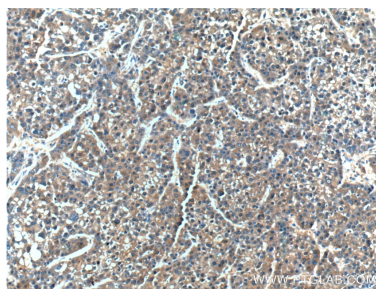
Selected Validation Data



HeLa cells were subjected to SDS PAGE followed by western blot with 14781-1-AP (ERLIN2 antibody) at dilution of 1:500 incubated at room temperature for 1.5 hours.



Immunohistochemical analysis of paraffin-embedded human liver cancer tissue slide using 14781-1-AP (ERLIN2 Antibody) at dilution of 1:200 (under 40x lens).



Immunohistochemical analysis of paraffin-embedded human liver cancer tissue slide using 14781-1-AP (ERLIN2 Antibody) at dilution of 1:200 (under 10x lens).