

For Research Use Only

SMTNL2 Polyclonal antibody

Catalog Number: 14782-1-AP



Basic Information

Catalog Number: 14782-1-AP	GenBank Accession Number: BC112177	Purification Method: Antigen affinity purification
Size: 150ul , Concentration: 450 µg/ml by Nanodrop and 213 µg/ml by Bradford method using BSA as the standard;	GeneID (NCBI): 342527	Recommended Dilutions: WB 1:500-1:3000 IP 0.5-4.0 ug for IP and 1:500-1:1000 for WB
Source: Rabbit	Full Name: smoothelin-like 2	IF 1:10-1:100
Isotype: IgG	Calculated MW: 50 kDa	
Immunogen Catalog Number: AG6395	Observed MW: 68-70 kDa	

Applications

Tested Applications: IF, IP, WB, ELISA	Positive Controls:
Species Specificity: human, mouse, rat	WB: COLO 320 cells, MCF-7 cells, mouse small intestine tissue, SGC-7901 cells
	IP: COLO 320 cells,
	IF: MCF-7 cells,

Background Information

Storage

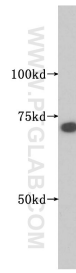
Storage:
Store at -20°C. Stable for one year after shipment.
Storage Buffer:
PBS with 0.02% sodium azide and 50% glycerol pH 7.3.
Aliquoting is unnecessary for -20°C storage

*** 20ul sizes contain 0.1% BSA

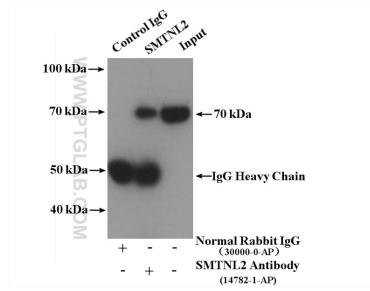
For technical support and original validation data for this product please contact:
T: 1 (888) 4PTGLAB (1-888-478-4522) (toll free in USA), or 1(312) 455-8498 (outside USA) E: proteintech@ptglab.com
W: ptglab.com

This product is exclusively available under Proteintech Group brand and is not available to purchase from any other manufacturer.

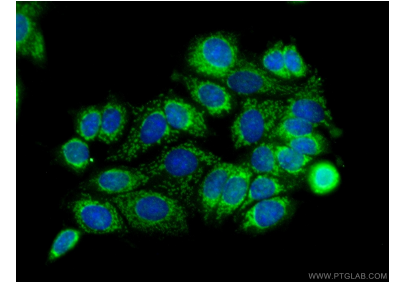
Selected Validation Data



COLO 320 cells were subjected to SDS PAGE followed by western blot with 14782-1-AP (SMTNL2 antibody) at dilution of 1:500 incubated at room temperature for 1.5 hours.



IP Result of anti-SMTNL2 (IP:14782-1-AP, 4ug; Detection:14782-1-AP 1:500) with COLO 320 cells lysate 4000ug.



Immunofluorescent analysis of (-20°C Ethanol) fixed MCF-7 cells using 14782-1-AP (SMTNL2 antibody) at dilution of 1:25 and Alexa Fluor 488-conjugated AffiniPure Goat Anti-Rabbit IgG(H+L).