

For Research Use Only

SMTNL2 Polyclonal antibody, PBS Only

Catalog Number: 14782-1-PBS



Basic Information

Catalog Number:

14782-1-PBS

Size:

100ug, Concentration: 1 mg/ml by
Nanodrop;

Source:

Rabbit

Isotype:

IgG

Immunogen Catalog Number:

AG6395

GenBank Accession Number:

BC112177

GeneID (NCBI):

342527

UNIPROT ID:

Q2TALS

Full Name:

smoothelin-like 2

Calculated MW:

50 kDa

Observed MW:

68-70 kDa

Purification Method:

Antigen affinity purification

Applications

Tested Applications:

WB, IF/ICC, IP, Indirect ELISA

Species Specificity:

human, mouse, rat

Storage

Storage:

Store at -80°C.

Storage Buffer:

PBS Only

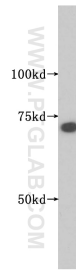
For technical support and original validation data for this product please contact:

T: 1 (888) 4PTGLAB (1-888-478-4522) (toll free
in USA), or 1(312) 455-8498 (outside USA)

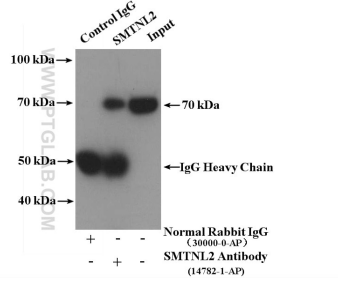
E: proteintech@ptglab.com
W: ptglab.com

This product is exclusively available under Proteintech Group brand and is not available to purchase from any other manufacturer.

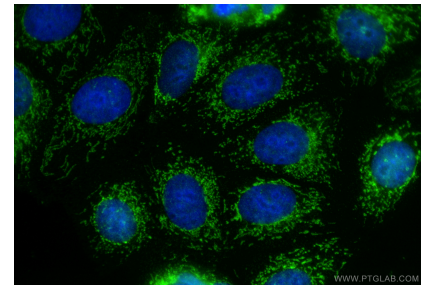
Selected Validation Data



COLO 320 cells were subjected to SDS PAGE followed by western blot with 14782-1-AP (SMTNL2 antibody) at dilution of 1:500 incubated at room temperature for 1.5 hours. This data was developed using the same antibody clone with 14782-1-PBS in a different storage buffer formulation.



IP result of anti-SMTNL2 (IP:14782-1-AP, 4ug; Detection:14782-1-AP 1:500) with COLO 320 cells lysate 400ug. This data was developed using the same antibody clone with 14782-1-PBS in a different storage buffer formulation.



Immunofluorescent analysis of (4% PFA) fixed MCF-7 cells using SMTNL2 antibody (14782-1-AP) at dilution of 1:200 and Coralite®488-Conjugated Goat Anti-Rabbit IgG(H+L) (SA00013-2). This data was developed using the same antibody clone with 14782-1-PBS in a different storage buffer formulation.