

For Research Use Only

SNRPD2 Polyclonal antibody

Catalog Number: 14789-1-AP

1 Publications



Basic Information

Catalog Number:

14789-1-AP

Size:

150ul, Concentration: 367 ug/ml by Bradford method using BSA as the standard;

Source:

Rabbit

Isotype:

IgG

Immunogen Catalog Number:

AG6443

GenBank Accession Number:

BC000486

GeneID (NCBI):

6633

UNIPROT ID:

P62316

Full Name:

small nuclear ribonucleoprotein D2 polypeptide 16.5kDa

Calculated MW:

14 kDa

Observed MW:

14-16 kDa

Purification Method:

Antigen affinity purification

Recommended Dilutions:

WB 1:500-1:2400

IHC 1:20-1:200

Applications

Tested Applications:

WB, IHC, ELISA

Cited Applications:

WB

Species Specificity:

human

Cited Species:

human

Note-IHC: suggested antigen retrieval with TE buffer pH 9.0; (*) Alternatively, antigen retrieval may be performed with citrate buffer pH 6.0

Positive Controls:

WB : A2780 cells, A549 cells, HL-60 cells

IHC : human skin tissue, human lung cancer tissue, human lung tissue

Background Information

Systemic lupus erythematosus is characterized by antibodies to a variety of intracellular self-antigens, such as dsDNA and Sm, and these serve as hallmarks in the diagnosis of systemic autoimmune diseases. SNRPD2 is one of Sm protein, and is required for pre-mRNA splicing, snRNP biogenesis.

Notable Publications

Author	Pubmed ID	Journal	Application
Sikandar Azam	31107149	RNA Biol	WB

Storage

Storage:

Store at -20°C. Stable for one year after shipment.

Storage Buffer:

PBS with 0.02% sodium azide and 50% glycerol pH 7.3.

Aliquoting is unnecessary for -20°C storage

*** 20ul sizes contain 0.1% BSA

For technical support and original validation data for this product please contact:

T: 1 (888) 4PTGLAB (1-888-478-4522) (toll free in USA), or 1(312) 455-8498 (outside USA)

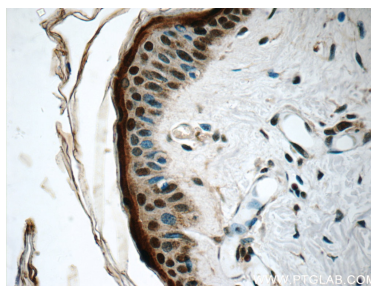
E: proteintech@ptglab.com
W: ptglab.com

This product is exclusively available under Proteintech Group brand and is not available to purchase from any other manufacturer.

Selected Validation Data



A2780 cells were subjected to SDS PAGE followed by western blot with 14789-1-AP (SNRPD2 antibody) at dilution of 1:500 incubated at room temperature for 1.5 hours.



Immunohistochemical analysis of paraffin-embedded human skin tissue slide using 14789-1-AP (SNRPD2 Antibody) at dilution of 1:50.