

For Research Use Only

# RPS4X Polyclonal antibody

Catalog Number: 14799-1-AP

Featured Product

13 Publications



## Basic Information

### Catalog Number:

14799-1-AP

### Size:

150ul, Concentration: 350 ug/ml by Nanodrop and 233 ug/ml by Bradford method using BSA as the standard;

### Source:

Rabbit

### Isotype:

IgG

### Immunogen Catalog Number:

AG6513

### GenBank Accession Number:

BC000472

### GeneID (NCBI):

6191

### UNIPROT ID:

P62701

### Full Name:

ribosomal protein S4, X-linked

### Calculated MW:

263 aa, 30 kDa

### Observed MW:

30 kDa

### Purification Method:

Antigen affinity purification

### Recommended Dilutions:

WB 1:500-1:3000

IP 0.5-4.0 ug for 1.0-3.0 mg of total protein lysate

IHC 1:20-1:200

IF/ICC 1:200-1:800

## Applications

### Tested Applications:

WB, IHC, IF/ICC, IP, ELISA

### Cited Applications:

WB, IHC, IF, CoIP, PLA

### Species Specificity:

human, mouse, rat

### Cited Species:

human, mouse, xenopus, frog

**Note-IHC: suggested antigen retrieval with TE buffer pH 9.0; (\*) Alternatively, antigen retrieval may be performed with citrate buffer pH 6.0**

### Positive Controls:

**WB**: HeLa cells, HepG2 cells, human liver tissue, MCF-7 cells, mouse pancreas tissue

**IP**: HepG2 cells,

**IHC**: human pancreas cancer tissue, human colon tissue

**IF/ICC**: MCF-7 cells,

## Background Information

RPS4X, a X-linked gene in the human, encodes a subunit of ribosomal protein S4, a component of the 40S subunit and 60S subunit. Ribosomal protein S4 is the only ribosomal protein known to be encoded by more than one gene, namely this gene, RPS4Y2 and the ribosomal protein S4, X-linked (RPS4X). [PMID:8358435]

## Notable Publications

Author	Pubmed ID	Journal	Application
Max Koppers	31746735	Elife	WB, PLA
Ranran Zhou	34738918	Aging (Albany NY)	IHC
Takashi Mino	26000482	Cell	WB

## Storage

### Storage:

Store at -20°C. Stable for one year after shipment.

### Storage Buffer:

PBS with 0.02% sodium azide and 50% glycerol pH 7.3.

Aliquoting is unnecessary for -20°C storage

\*\*\* 20ul sizes contain 0.1% BSA

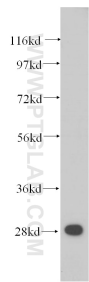
For technical support and original validation data for this product please contact:

T: 1 (888) 4PTGLAB (1-888-478-4522) (toll free in USA), or 1(312) 455-8498 (outside USA)

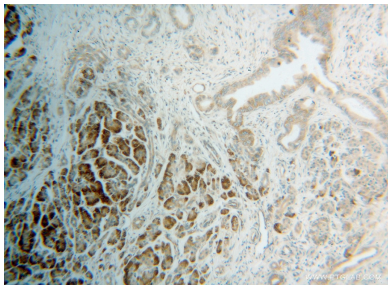
E: [proteintech@ptglab.com](mailto:proteintech@ptglab.com)  
W: [ptglab.com](http://ptglab.com)

This product is exclusively available under Proteintech Group brand and is not available to purchase from any other manufacturer.

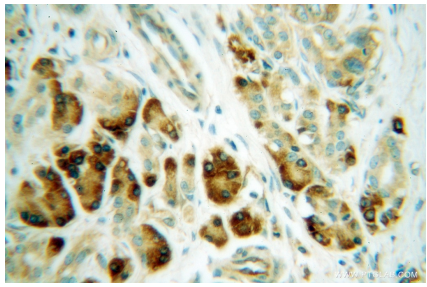
Selected Validation Data



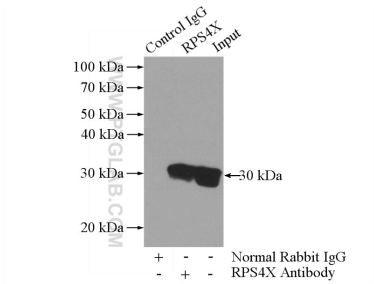
HeLa cells were subjected to SDS PAGE followed by western blot with 14799-1-AP (RPS4X antibody) at dilution of 1:500 incubated at room temperature for 1.5 hours.



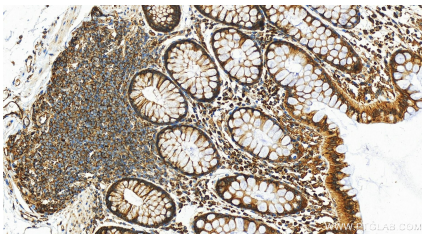
Immunohistochemical analysis of paraffin-embedded human pancreas cancer using 14799-1-AP (RPS4X antibody) at dilution of 1:100 (under 10x lens).



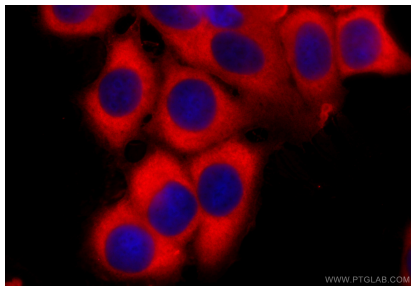
Immunohistochemical analysis of paraffin-embedded human pancreas cancer using 14799-1-AP (RPS4X antibody) at dilution of 1:100 (under 40x lens).



IP result of anti-RPS4X (IP:14799-1-AP, 3ug; Detection:14799-1-AP 1:500) with HepG2 cells lysate 3200ug.



Immunohistochemical analysis of paraffin-embedded human colon tissue slide using 14799-1-AP (RPS4X antibody) at dilution of 1:300 (under 20x lens). Heat mediated antigen retrieval with Tris-EDTA buffer (pH 9.0).



Immunofluorescent analysis of (-20°C Methanol) fixed MCF-7 cells using RPS4X antibody (14799-1-AP) at dilution of 1:400 and CoraLite®594-Conjugated Goat Anti-Rabbit IgG(H+L) (SA00013-4).