

For Research Use Only

ARD1A Polyclonal antibody

Catalog Number: 14803-1-AP **3 Publications**



Basic Information

Catalog Number: 14803-1-AP	GenBank Accession Number: BC000308	Purification Method: Antigen affinity purification
Size: 150ul, Concentration: 450 µg/ml by Nanodrop and 280 µg/ml by Bradford method using BSA as the standard;	GeneID (NCBI): 8260	Recommended Dilutions: WB 1:1000-1:6000 IP 0.5-4.0 ug for IP and 1:500-1:1000 for WB
Source: Rabbit	Full Name: ARD1 homolog A, N-acetyltransferase (S. cerevisiae)	IHC 1:50-1:500 IF 1:20-1:200
Isotype: IgG	Calculated MW: 26 kDa	
Immunogen Catalog Number: AG6519	Observed MW: 26 kDa	

Applications

Tested Applications: IF, IHC, IP, WB, ELISA	Positive Controls:
Cited Applications: WB	WB: HL-60 cells, mouse spleen tissue, HeLa cells, MCF-7 cells
Species Specificity: human, mouse, rat	IP: MCF-7 cells,
Cited Species: human, mouse, Yeast	IHC: human breast cancer tissue,
Note-IHC: suggested antigen retrieval with TE buffer pH 9.0; (*) Alternatively, antigen retrieval may be performed with citrate buffer pH 6.0	IF: MCF-7 cells,

Background Information

Notable Publications

Author	Pubmed ID	Journal	Application
Max J Dörfel	27668839	Yeast	WB
Hyaе Yon Kweon	34355692	Elife	WB
Jürgen Eirich	37230590	Methods Enzymol	

Storage

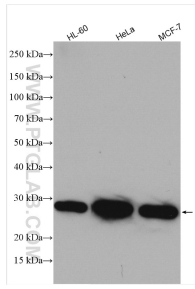
Storage:
Store at -20°C. Stable for one year after shipment.
Storage Buffer:
PBS with 0.02% sodium azide and 50% glycerol pH 7.3.
Aliquoting is unnecessary for -20°C storage

***** 20ul sizes contain 0.1% BSA**

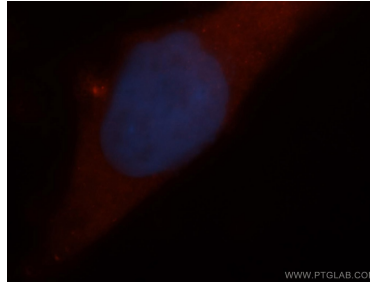
For technical support and original validation data for this product please contact:
T: 1 (888) 4PTGLAB (1-888-478-4522) (toll free in USA), or 1(312) 455-8498 (outside USA)
E: proteintech@ptglab.com
W: ptglab.com

This product is exclusively available under Proteintech Group brand and is not available to purchase from any other manufacturer.

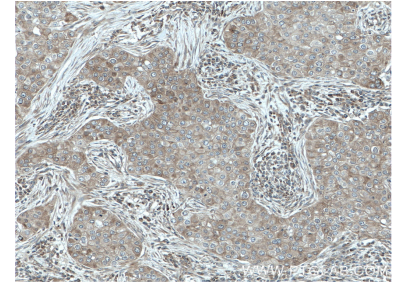
Selected Validation Data



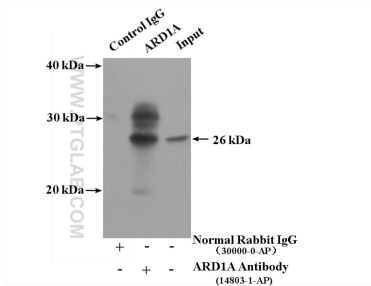
Various lysates were subjected to SDS PAGE followed by western blot with 14803-1-AP (ARD1A antibody) at dilution of 1:3000 incubated at room temperature for 1.5 hours.



Immunofluorescent analysis of MCF-7 cells, using ARD1A antibody 14803-1-AP at 1:50 dilution and Rhodamine-labeled goat anti-rabbit IgG (red). Blue pseudocolor = DAPI (fluorescent DNA dye).



Immunohistochemical analysis of paraffin-embedded human breast cancer tissue slide using 14803-1-AP (ARD1A antibody) at dilution of 1:200 (under 10x lens. Heat mediated antigen retrieval with Tris-EDTA buffer (pH 9.0).



IP Result of anti-ARD1A (IP:14803-1-AP, 4ug; Detection:14803-1-AP 1:500) with MCF-7 cells lysate 3200ug.